

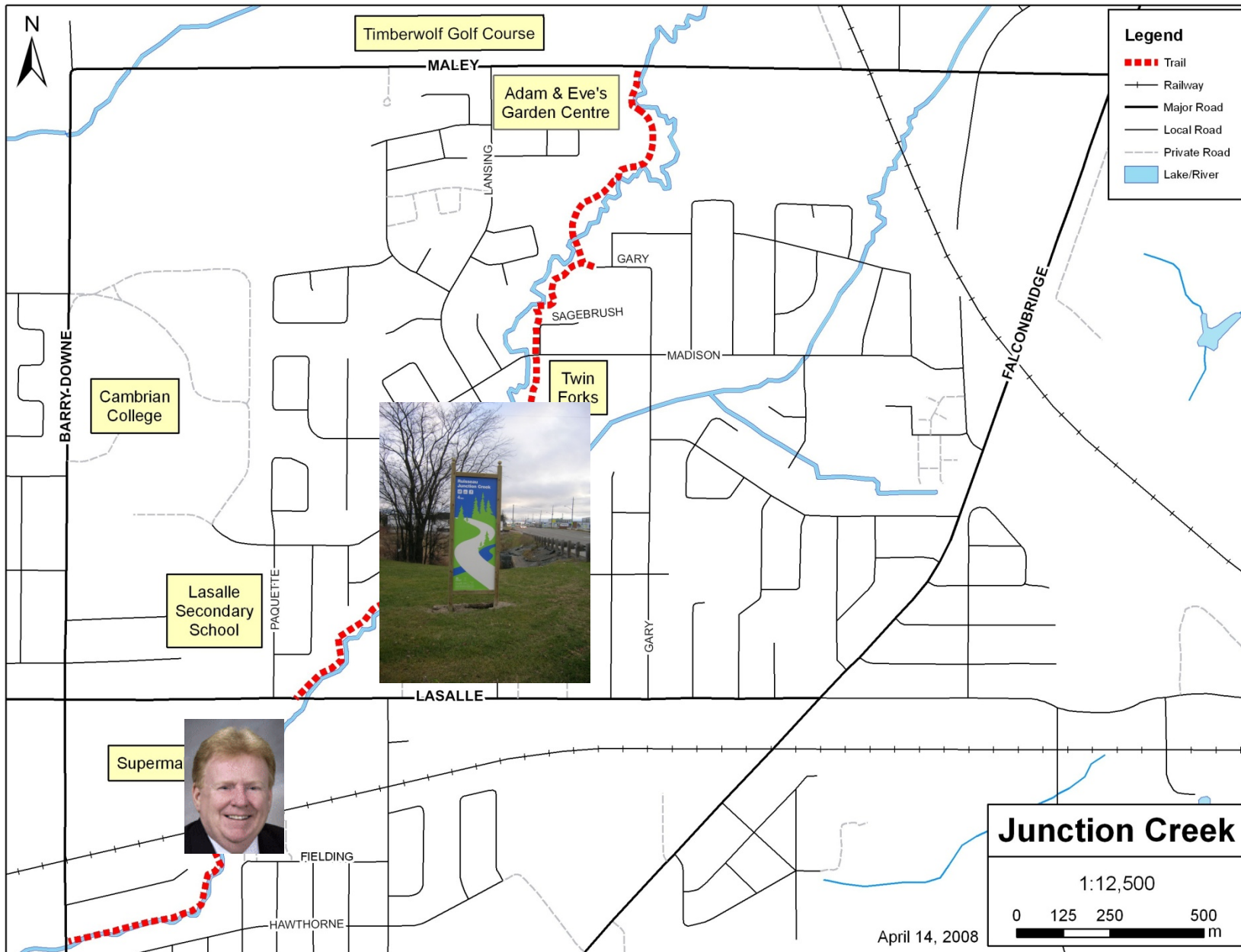
# A missing link in the Junction Creek Waterway Park



MARG SEREGELY

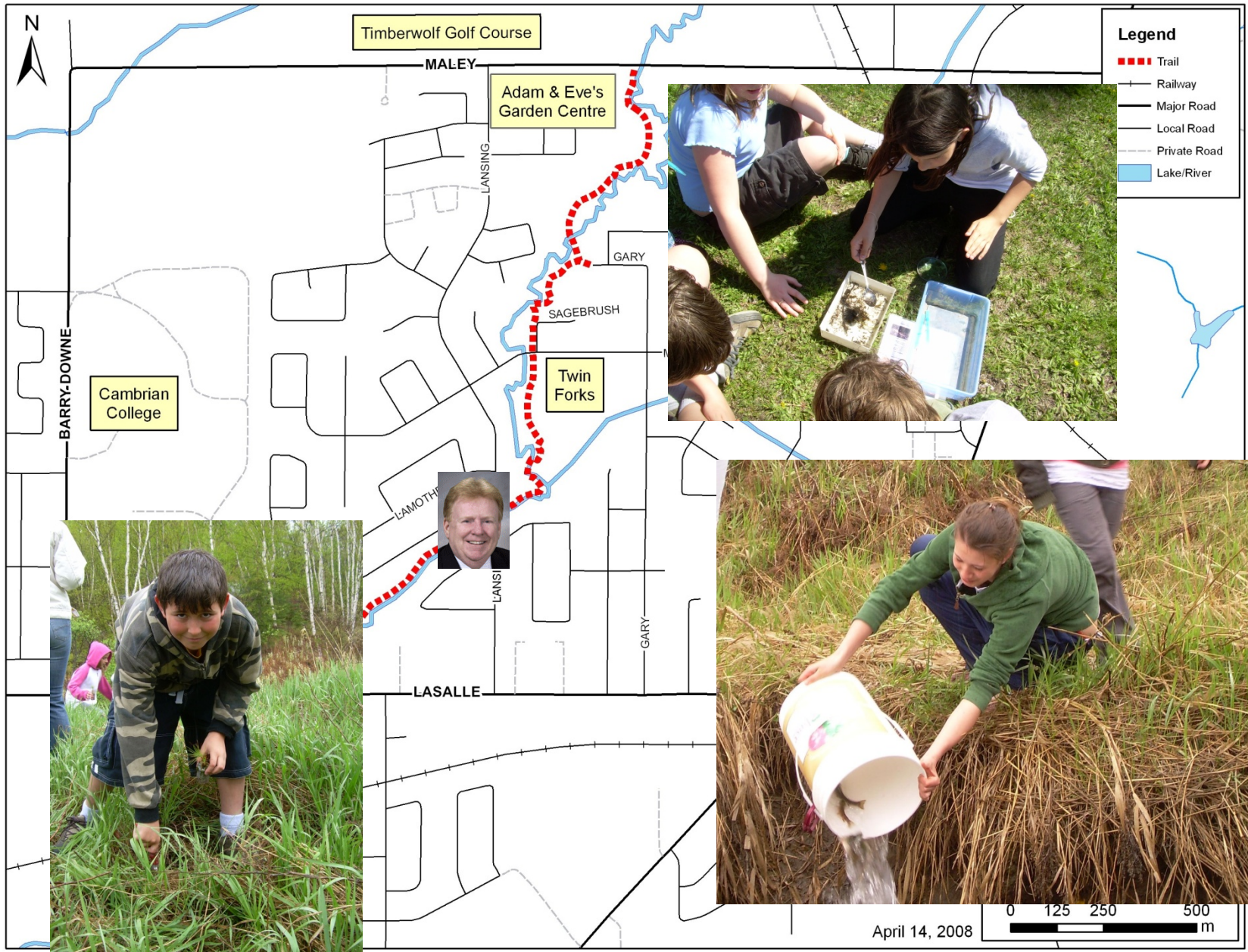
## YUK!

Remains of a car believed to be a 1976 Volkswagen were discovered in Junction Creek off Lasalle Boulevard by members of a work crew led by the Junction Creek Stewardship Committee. Workers used a tow truck to pull up the remains.



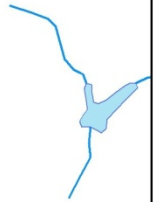






**Legend**

- Trail
- Railway
- Major Road
- Local Road
- Private Road
- Lake/River



April 14, 2008

0 125 250 500 m

krista maps©

# Junction Creek Adventures

## Junction Creek Adventures: An Ant's Life



**Distance:** 1.5 km return.

**Approximate time:** 1hr30

**Location:** Twin Forks Park on Gary Ave between Madison Ave and Josephine St. Free parking at the Park.

**Trail tools:** Prepare and gather these tools for each person:

- Antennae (tape pipe cleaners with rounded edges to a headband).
- Third eye (magnifying glass)

## Junction Creek Raccoon Robber Challenge



**Distance:** 2 km return.

**Approximate time:** 2hr

**Location:** Twin Forks Park on Gary Ave between Madison Ave and Josephine St. Free parking at the Park.

**Trail tools:** Prepare and gather these tools for each person:

- Raccoon mask
- Playing cards: Ace through 6 of one suit.
- Vision-blocker (bandana/cloth)





# Sagebrush Pedestrian Walkway











*Thank you*