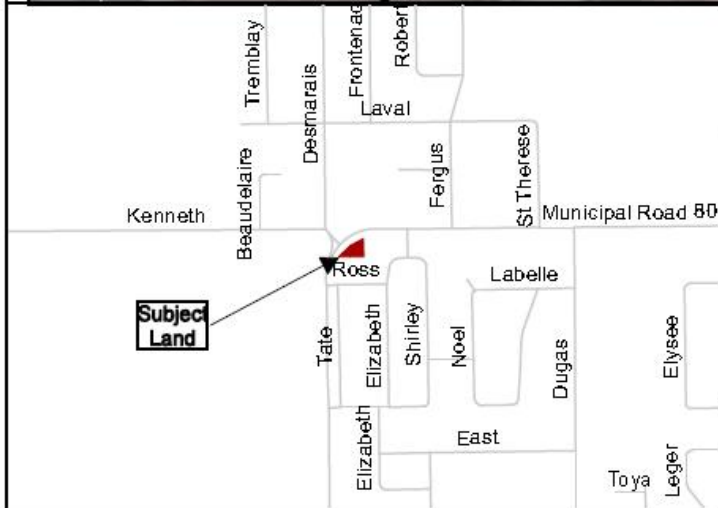
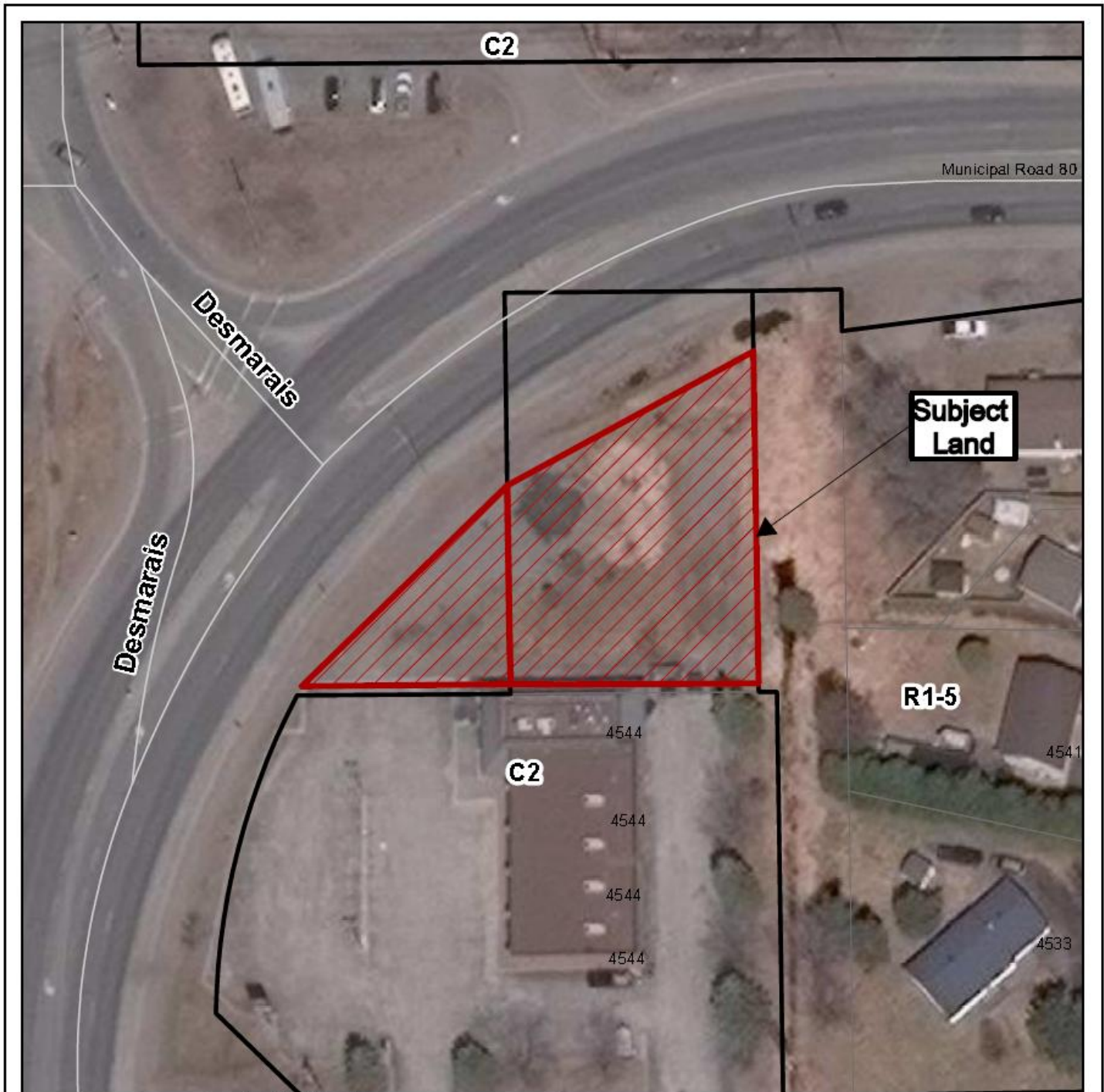


# Schedule 'A'



## Municipal Road 80, Val Therese Declaration of Surplus Vacant Land



Part of PIN 73504-0328 (LT),  
being Part 5, Plan 53R-15580, &  
Part of PIN 73504-2250 (LT),  
being Part 3 on Plan 53R-15580,  
Part of Lot 6, Con 2,  
Township of Hanmer,  
City of Greater Sudbury

NTS

Date: 2021-02-04