

Presented To:	Operations Committee
Presented:	Monday, Nov 16, 2020
Report Date	Monday, Oct 26, 2020
Type:	Managers' Reports

Request for Decision

Traffic and Parking By-law Amendment - Designated Centre Lane of Roadway for Left Turns Only on Elm Street

Resolution

THAT the City of Greater Sudbury designates the centre lane of Elm Street for left turns only from 190 metres west of Ethelbert Street to Regent Street/Beatty Street;

AND THAT the City of Greater Sudbury directs staff to prepare a by-law to amend Traffic and Parking By-law 2010-1 in the City of Greater Sudbury to implement the recommended changes, as outlined in the report entitled "Traffic and Parking By-law Amendment – Designated Centre Lane of Roadway for Left Turns Only on Elm Street", from the General Manager of Growth and Infrastructure, presented at the Operations Committee meeting on November 16, 2020.

Relationship to the Strategic Plan / Health Impact Assessment

This report refers to operational matters.

Report Summary

This report will outline a recommended amendment to the Traffic and Parking By-law 2010-1 to enable the designation of a newly constructed centre lane of roadway for left turns only on Elm Street, Sudbury.

Financial Implications

Recommendations of this report were carried out within the approved capital budget for the rehabilitation project.

Signed By

Manager Review

Joe Rocca
Traffic and Asset Management
Supervisor
Digitally Signed Oct 26, 20

Division Review

David Shelsted
Director of Infrastructure Capital
Planning Services
Digitally Signed Oct 26, 20

Financial Implications

Steve Facey
Manager of Financial Planning &
Budgeting
Digitally Signed Oct 26, 20

Recommended by the Department

Tony Cecutti
General Manager of Growth and
Infrastructure
Digitally Signed Oct 30, 20

Recommended by the C.A.O.

Ed Archer
Chief Administrative Officer
Digitally Signed Nov 4, 20

Traffic By-Law Amendment - Designated Centre Lane of Roadway for Left Turns Only on Elm Street, Sudbury

Background

The City of Greater Sudbury completed an infrastructure renewal project on Elm Street in Sudbury between Big Nickel Road and Regent Street. An objective of this capital project was to apply a Complete Streets lens to the corridor by reconfiguring the existing roadway to include a two-way centre left turn lane and on road bike lanes along each side of Elm Street. The area this reconfiguration occurred is outlined in Figure 1 below.

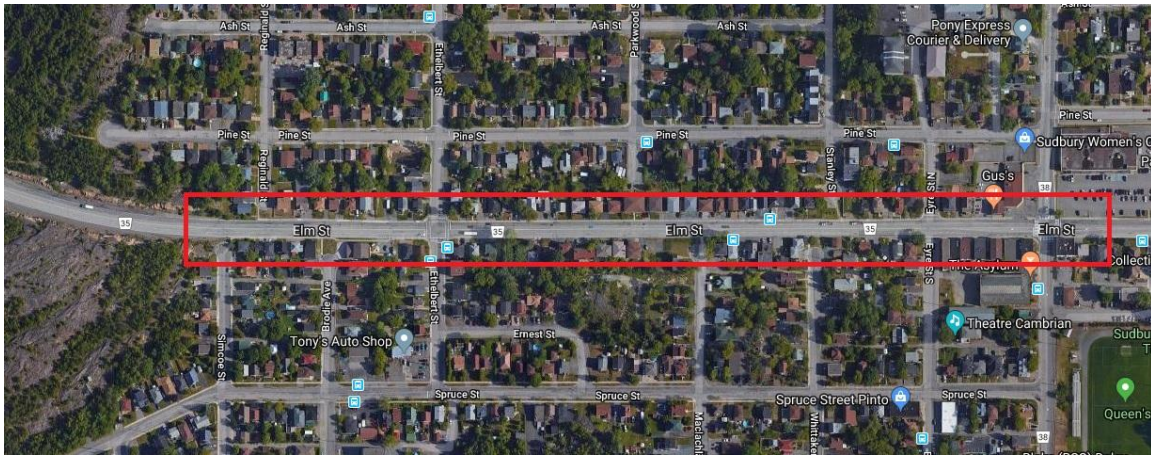


Figure 1 – Area of Reconfigured Road

This newly created two-way centre left turn lane will improve safety on this major arterial road by allowing an area outside of the through lane for left turn maneuvers to occur.

It is recommended that the City's Traffic and Parking Bylaw 2010-1 be amended to designate the new centre lane for two-way left turns. The necessary signs and pavement markings have been installed as part of the rehabilitation project.