

**Ministry of Energy, Northern
Development and Mines**

Ontario Geological Survey
Mines & Minerals Division
Resident Geologist Program
5520 Highway 101 East, Bag 3060
South Porcupine ON P0N 1H0
Tel.: 705-465-5013
Fax.: 705-235-1620

**Ministère de l'Énergie, du Développement du
Nord et des Mines**

Commission Géologique de l'Ontario
Division des mines et des minéraux
La programme du géologue resident
5520 Route 101 Est, Sac 3060
South Porcupine ON P0N 1H0
Tél. : 705-465-5013
Téléc. : 705-235-1620

May 13, 2020

Mauro Manzoni, MPL, MCIP, RPP
Senior Planner
Development Approvals Section
Planning Services Division
City of Greater Sudbury
705-674-4455 ext 4293
mauro.manzoni@greatersudbury.ca

via email only

Re: Official Plan Amendment application

Dear Mauro Manzoni,

Thank you for the opportunity to provide comments to the Official Plan Amendment application at 2099 Municipal Road 80 in Blezard Township. The intent of the application is to rezone the subject lot from "Mining/Mineral Reserve" to "Rural" in order to permit the severance of a 3.64 ha lot from a 6.2 ha privately owned lot. The Ministry of Energy, Northern Development and Mines (ENDM) checked this property for mining land tenure, geology, mineral deposits, mineral and aggregate potential, abandoned mine sites and natural geological hazards, with the following results:

- There are no active mining claims on or within 1000m of the property, as the land in this area is patented.
- This property is within the Upper Zone of the Sudbury Igneous Complex (SIC). The nickel-copper mineralization is at the SIC- Huronian Supergroup (2.2 Ga to 2450 Ma) contact which may be accessed by mineshaft from within the Lower Zone of the SIC, or is in SIC-related rocks in the footwall, Huronian Supergroup (MRD 126-Rev 1, 1:250,000 scale Bedrock Geology of Ontario, OGS, 2011).
- There are currently no producing mines in the township. Past producing mines are all related to the Lower SIC contact or in the footwall.
- There are no Mineral Deposit Inventory (MDI) sites on or within 1000m of the property. The only Mineral Deposit Inventory record near the review area is a gravel pit, that is designated Discretionary. The nearest gold occurrence

(Papineau Occurrence) is 3 km to the northwest and there is a lead, zinc, copper occurrence 2 km to the north.

- There are no known and recorded abandoned mine hazards on or within 1000m of the property.
- The Metallic Mineral Potential Estimation Tool (MMPET) is a broad scale geographic tool used for the estimation of metallic mineral potential. The MMPET score for this property is a maximum 100 out of 100, which is very high, as the property is within the SIC, which hosts numerous ore bodies. However, from a Sudbury Nickel – Copper Deposit standpoint, using the common metrics of the deposit type and model, the specific area in question is likely to have a lower potential. Additionally, only one MDI gold occurrence (Papineau Occurrence) appears within the SIC, and although there are others within the Whitewater Group in the basin proper, gold in the SIC is unlikely to be significant.

Maps of bedrock geology, Mineral Deposit Inventory and Abandoned Mines Information System records are available for viewing or free download through the OGSEarth portal using the following link: <http://www.mndm.gov.on.ca/en/mines-and-minerals/applications/ogsearth>.

Regards,



Catherine Daniels, M. Sc., P. Geo.
Regional Land Use Geologist – NE Region
Ontario Geological Survey
catherine.daniels@ontario.ca

Attachments:

Maps

AMIS Disclaimer

**Ministry of Energy, Northern
Development and Mines**

Mineral Development and Lands
Branch

933 Ramsey Lake Road, B6
Sudbury ON P3E 6B5
Tel.: (705) 670-5798
Fax: (705) 670-5803
Toll Free: 1-888-415-9845, Ext 5798

**Ministère de l'Énergie, du Développement
du Nord et des Mines**

Direction de l'exploitation des minéraux et de
la gestion des terrain minier

933, chemin du lac Ramsey, étage B6
Sudbury ON P3E 6B5
Tél. : 705 670-5798
Télec. : 705 670-5803
Sans frais : 1 888 415-9845, poste 5798



**Please be aware of the following regarding the Abandoned Mines Information
System (AMIS) data:**

The information herein is provided by ENDM free of charge and for information purposes only. All information is provided "as is" without warranties or conditions of any kind either expressed or implied. In providing the AMIS database information, ENDM and the Government of Ontario accept no liability and make no warranty or any representation regarding the use, accuracy, applicability, completeness, performance, availability, security or reliability of the information, through field measurements or otherwise. It is the sole responsibility of the person choosing to receive and use this information to verify the accuracy of any information obtained from this data package. The reader is warned to undertake his or her own independent investigation to validate this information. Reports provided within are not compliant with CSA standards.

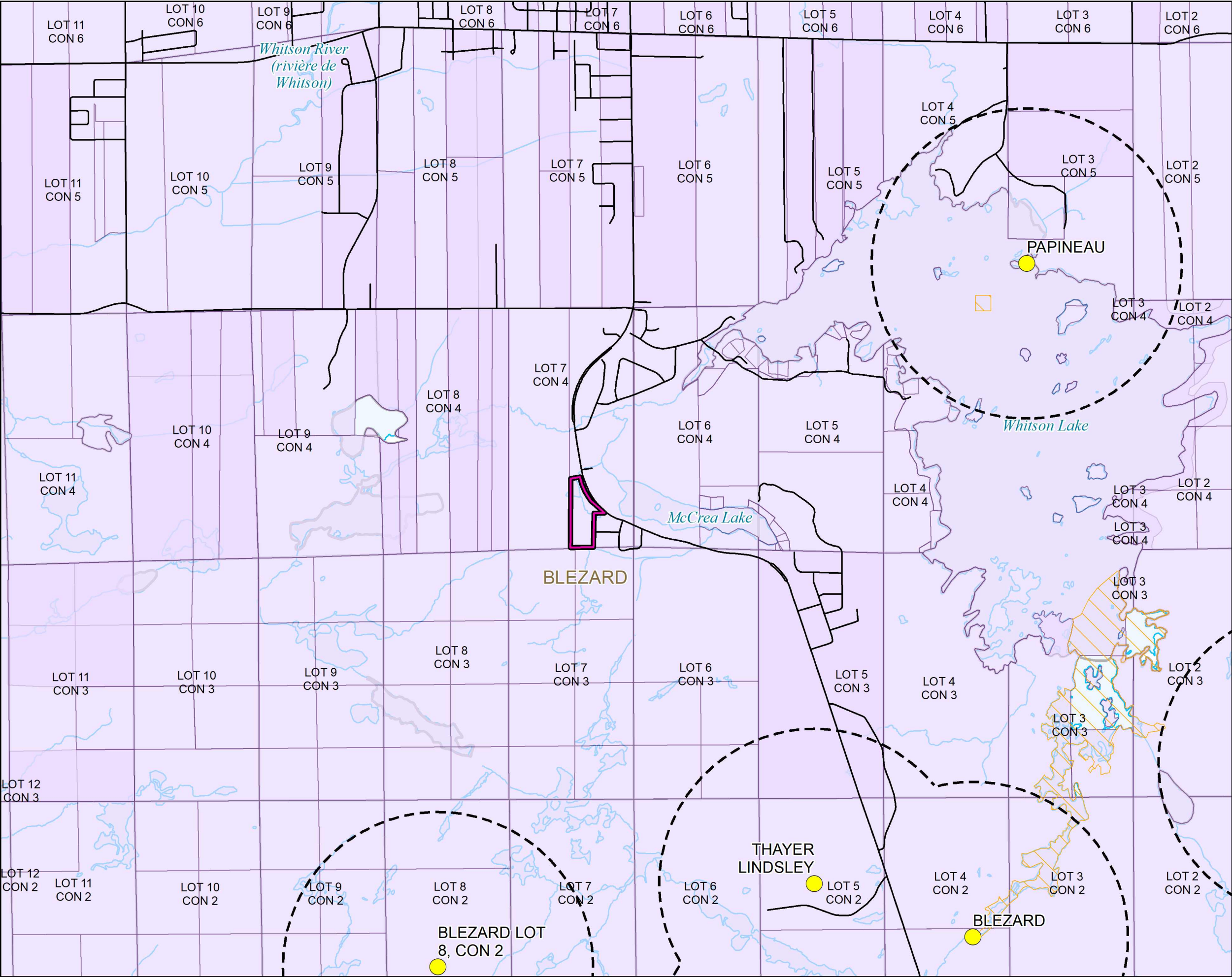
The maps and/or coordinates provided are not intended for navigational, survey, or land title determination purposes. Maps included may not show unregistered land tenure and interests in land including certain patents, leases, easements, right of ways, flooding rights, licences, or other forms of disposition of rights and interest from the Crown. Land tenure and land uses that restrict or prohibit free entry to stake mining claims may not be illustrated.

Ministry Contact Information

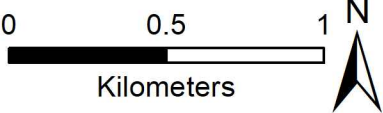
Abandoned Mines Program

Willet Green Miller Center – Level B6
933 Ramsay Lake Road
Sudbury ON P3E 6B5

Chantal Frescura
Phone: 705-670-5937
Email: chantal.frescura@ontario.ca
Mine Hazards Technical Specialist



Township of Blezard 2099 Municipal Road 80: Land Tenure and Abandoned Mines Information System



- AMIS Site
- Road
- River/Stream
- Lake
- 1 km Buffer around AMIS Site
- Subject Property (PIN 73498-0267)
- Township
- Lot, Improved
- Withdrawal
- Disposition

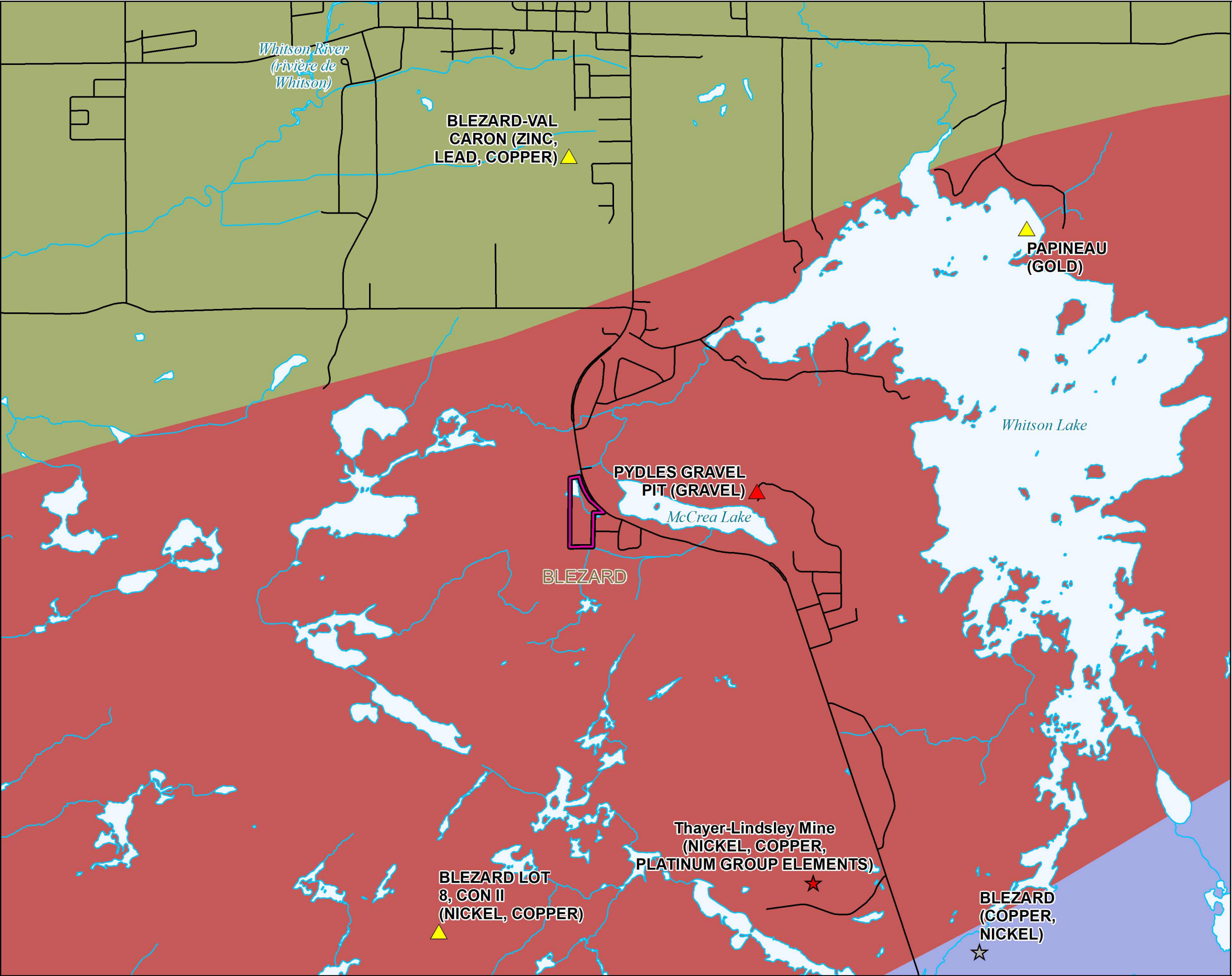
Projection:
Universal Transverse Mercator - Zone 17 - NAD83

This map is illustrative only. Do not rely on it as being a precise indicator of routes, locations of features, nor as a guide to navigation. Every possible effort has been made to ensure the Accuracy of the information presented on this map; however, the Ontario Ministry of Energy, Northern Development and Mines does not assume liability for errors that may occur. Users should verify critical information.

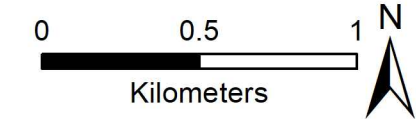
Please be aware of the following regarding our AMIS data: The information herein is provided by ENDM free of charge and for information purposes only. All information is provided "as is" without warranties or conditions of any kind either expressed or implied. In providing the AMIS database information, ENDM and the Government of Ontario accept no liability and make no warranty or any representation regarding the use, accuracy, applicability, completeness, performance, availability, security or reliability of the information, through field measurements or otherwise. It is the sole responsibility of the person choosing to receive and use this information to verify the accuracy of any information obtained from this data package. The reader is warned to undertake his or her own independent investigation to validate this information. Reports provided within are not compliant with CSA standards. The maps and/or coordinates provided are not intended for navigational, survey, or land title determination purposes. Maps included may not show unregistered land tenure and interests in land including certain patents, leases, easements, right of ways, flooding rights, licences, or other forms of disposition of rights and interest from the Crown. Land tenure and land uses that restrict or prohibit free entry to stake mining claims may not be illustrated.

Land tenure data: Ontario Ministry of Energy, Northern Development and Mines, Mining Lands Section: Ontario Mining Land Tenure Spatial Data, 2020.
AMIS data: Ministry of Energy, Northern Development and Mines. Abandoned Mines Information System (AMIS) Database (November 2018 update).
Base data: Ontario Ministry of Natural Resources and Forestry, Land Information Ontario.

NDM20201748 Published 4/30/2020
© 2020, Queen's Printer for Ontario



Township of Blezard 2099 Municipal Road 80: Mineral Deposit Inventory and Bedrock Geology



Mineral Deposit Inventory (MDI)

★

 Past Producing Mine without Reserves

★

 Past Producing Mine with Reserves

▲

 Occurrence

▲

 Discretionary Occurrence

—

 Road

~~~~~

 River/Stream

~~~~~

 Lake

□

 Subject Property (PIN 73498-0267)

□

 Township

Bedrock Geology

■

 29, Sudbury Igneous Complex

■

 28, Whitewater Gp.

■

 18, Elliot Lake Gp

Projection:
Universal Transverse Mercator - Zone 17 - NAD83

This map is illustrative only. Do not rely on it as being a precise indicator of routes, locations of features, nor as a guide to navigation. Every possible effort has been made to ensure the Accuracy of the information presented on this map; however, the Ontario Ministry of Energy, Northern Development and Mines does not assume liability for errors that may occur. Users should verify critical information.

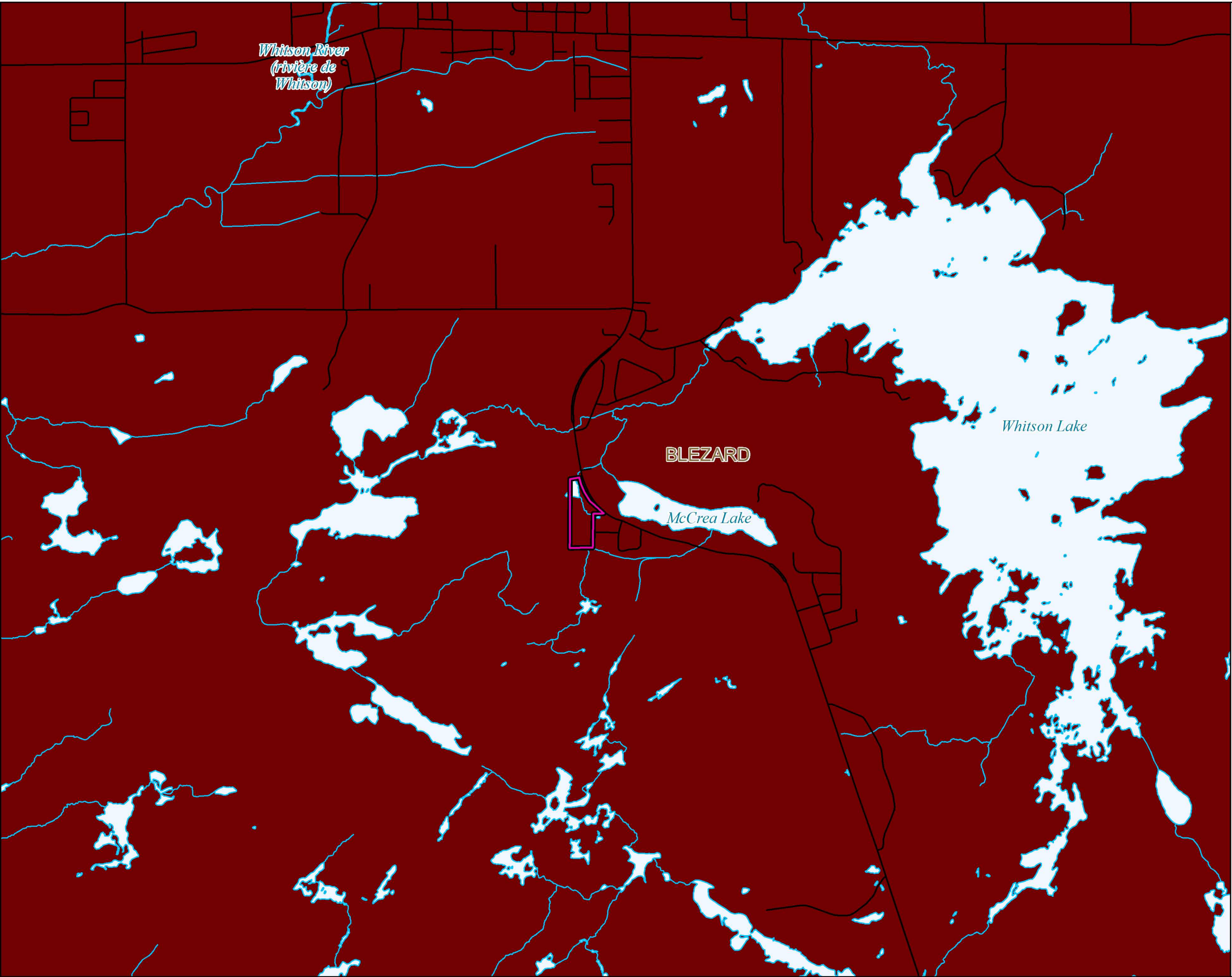
Bedrock geology data: Ontario Geological Survey 2011. 1:250 000 Scale Bedrock Geology of Ontario; Ontario Geological Survey, Miscellaneous Release---Data 126 - Revision 1.

Mineral Deposit Inventory: Ontario Geological Survey 2020. Mineral Deposit Inventory (April 2020 update).

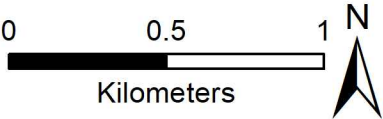
Base data: Ontario Ministry of Natural Resources and Forestry, Land Information Ontario.

NDM20201750 Published 4/30/2020
© 2020, Queen's Printer for Ontario

Ontario



**Township of Blezard
2099 Municipal Road 80:
Metallic Mineral Potential
Estimation Tool**



- Road
- ~ River/Stream
- ⬮ Lake
- ⬮ Subject Property (PIN 73498-0267)
- ⬮ Township

Metallic Mineral Potential Estimation Tool Index

- 90.1 - 100
- 80.1 - 90
- 70.1 - 80
- 60.1 - 70
- 50.1 - 60
- 40.1 - 50
- 30.1 - 40
- 20.1 - 30
- 10.1 - 20
- 0 - 10

Projection:
Universal Transverse Mercator - Zone 17 - NAD83

This map is illustrative only. Do not rely on it as being a precise indicator of routes, locations of features, nor as a guide to navigation. Every possible effort has been made to ensure the Accuracy of the information presented on this map; however, the Ontario Ministry of Energy, Northern Development and Mines does not assume liability for errors that may occur. Users should verify critical information.

This map shows an MMPET estimation derived from at-surface geological data as published in ENDM Dataset MRD 126-- Revised, 1:250,000 Scale Bedrock Geology of Ontario, OGS 2011 and using Mineral Deposit Inventory data released in March 2016. MMPET is a GIS-based application that provides a high level, regional scale illustration of the likelihood of any given parcel of land to be prospective for a metallic mineral resource.

Base data: Ontario Ministry of Natural Resources and Forestry, Land Information Ontario.

NDM20201749 Published 4/30/2020
© 2020, Queen's Printer for Ontario

