



ASSET MANAGEMENT UPDATE

Mayor and Council
City of Greater Sudbury
2018-7-10

Asset Management

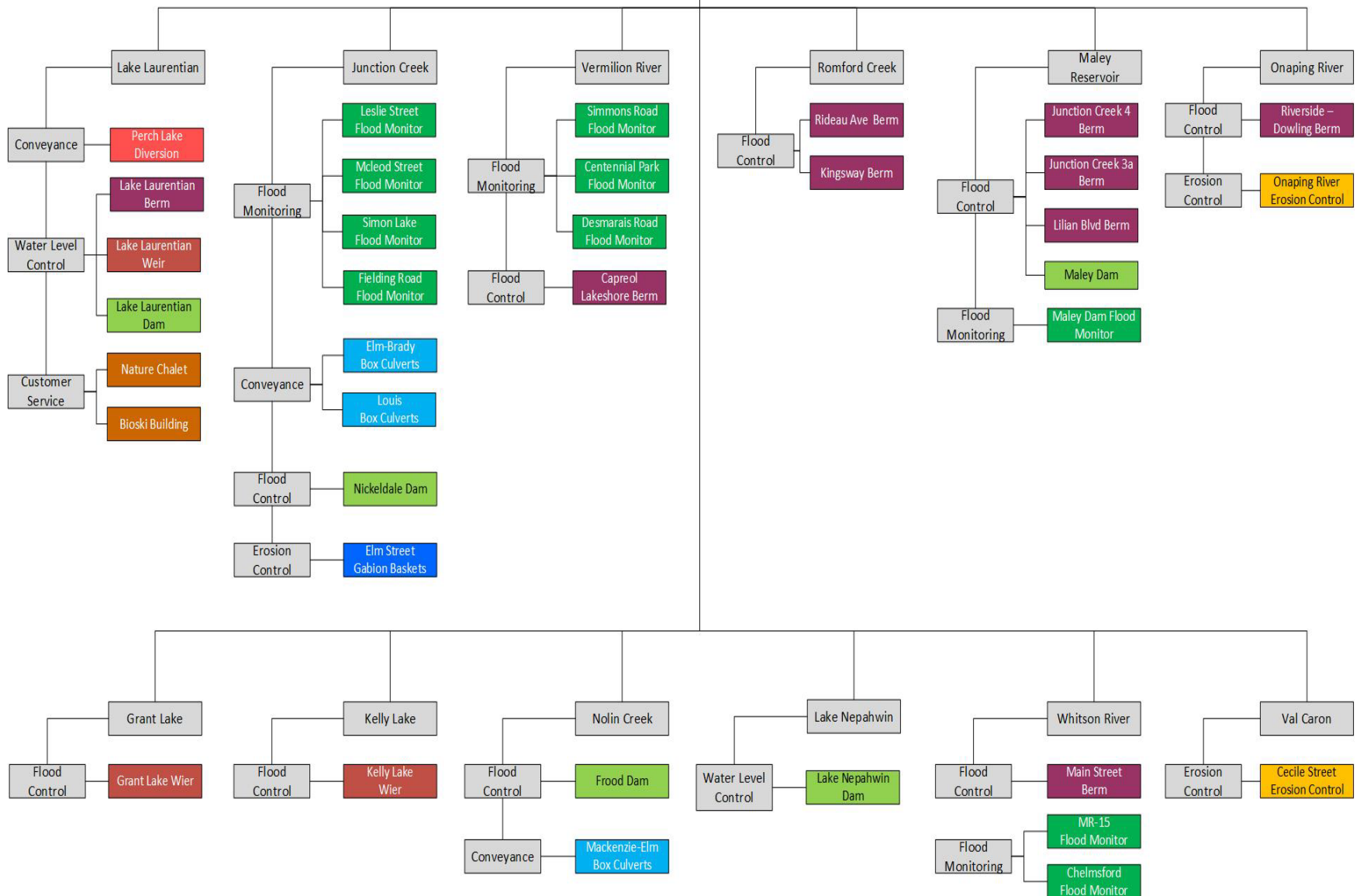


\$13.5 Million in capital assets

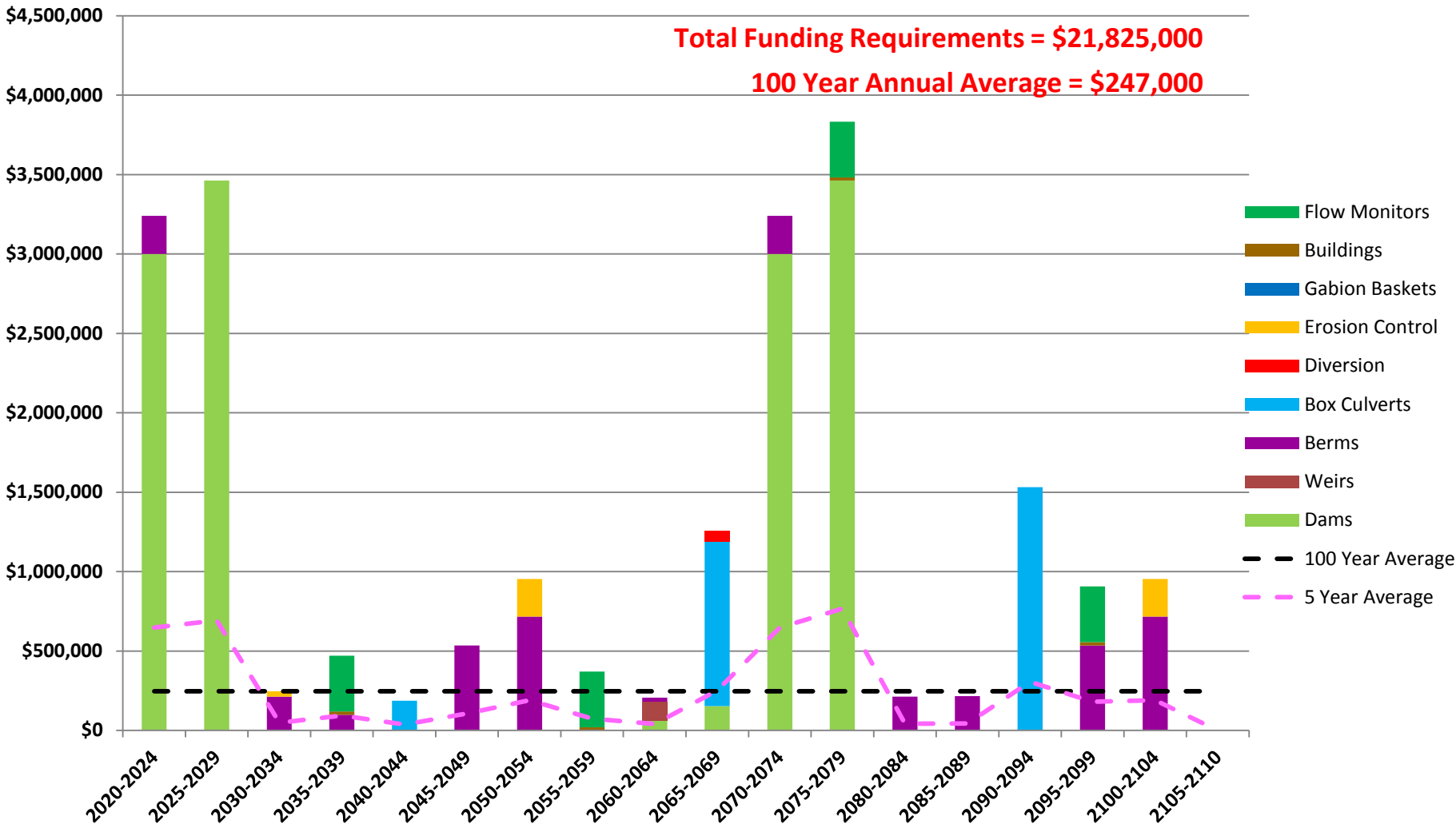
- *Flood Control (7)*
- *Lake Level Control (4)*
- *Flow Conveyance(3)*
- *Flood Monitoring (6)*
- *Erosion Control (3)*
- *Buildings (2)*



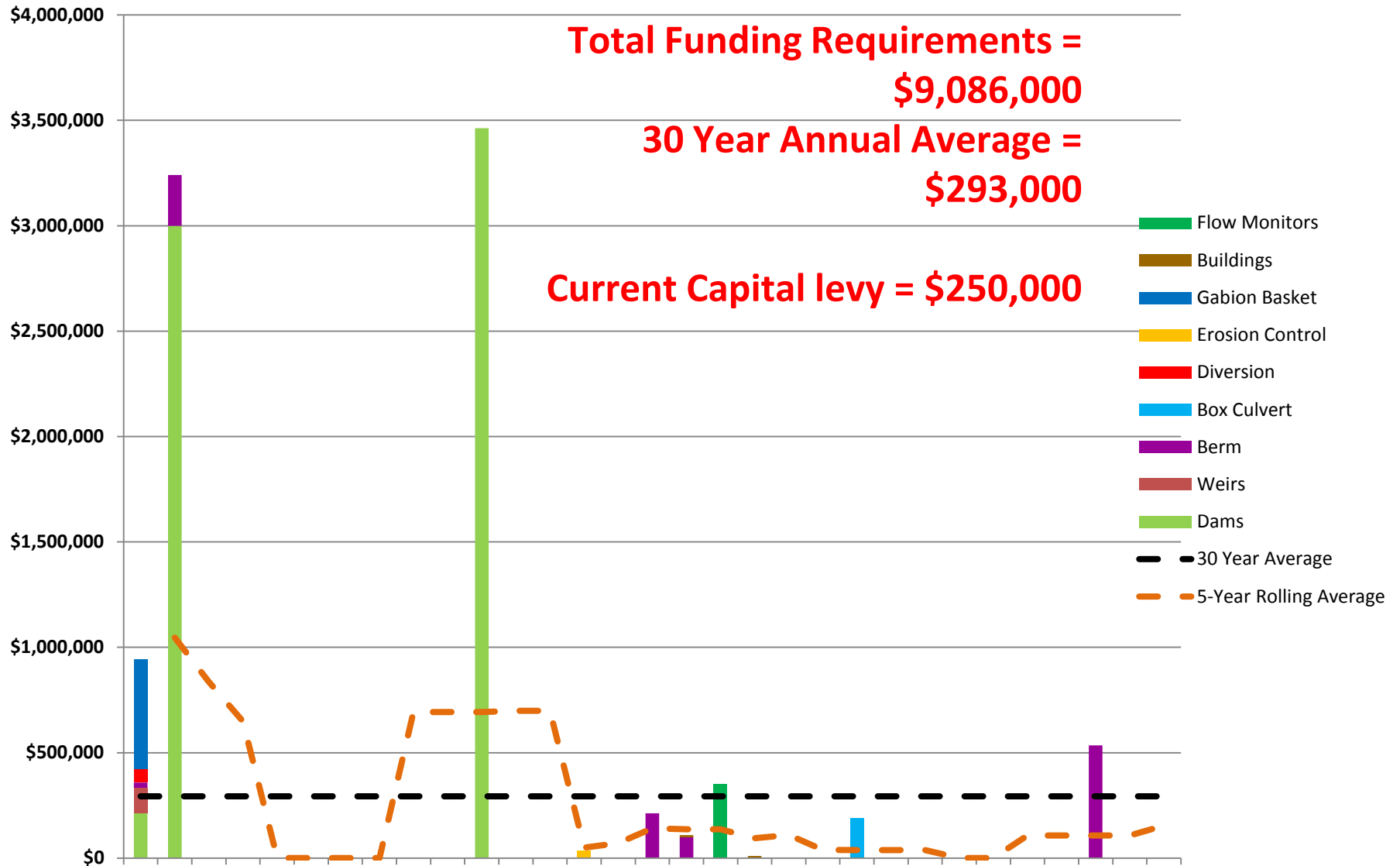
Preliminary Asset Hierarchy



Asset Renewal Expenditures - 100 Year Forecast

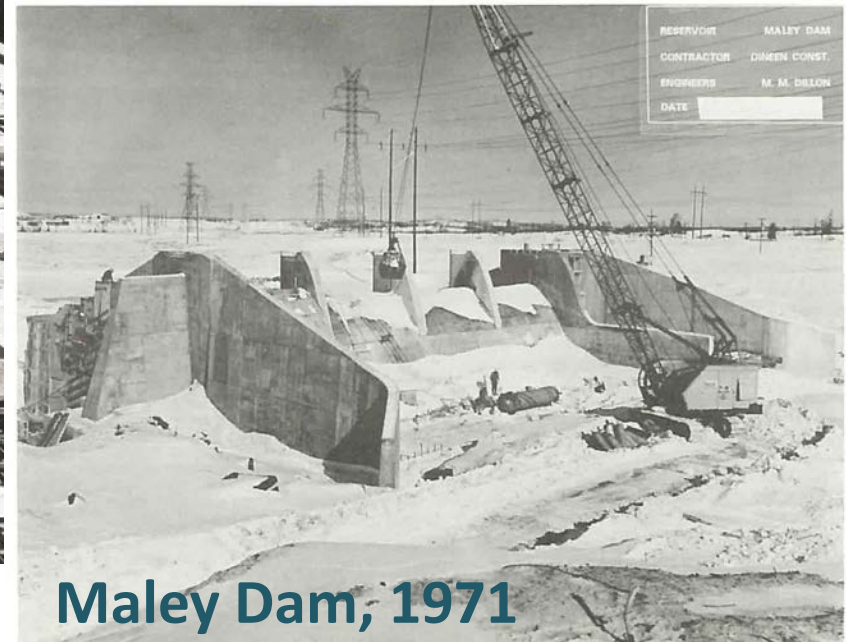


Asset Renewal - 30 Year Forecast



Thank you

Nolin's Creek, 1966



RESERVOIR	MALEY DAM
CONTRACTOR	DIMEN CONST.
ENGINEERS	M. M. DELON
DATE	

Maley Dam, 1971