

Flour Mill Museum Relocation and St. Charles Lift Station/Forcemain Project



Luisa Valle, Director of Children & Citizen Services
Wendi Mannerow, Water/Wastewater Engineer

Background

The Flour Mill Museum, located at 245 St. Charles Street, is 1 of 4 Greater Sudbury Museums and consists of:

- Heritage House
- Office & Storage
- Centennial Log Cabin

Heritage House



Centennial Log Cabin



Office Building & Storage



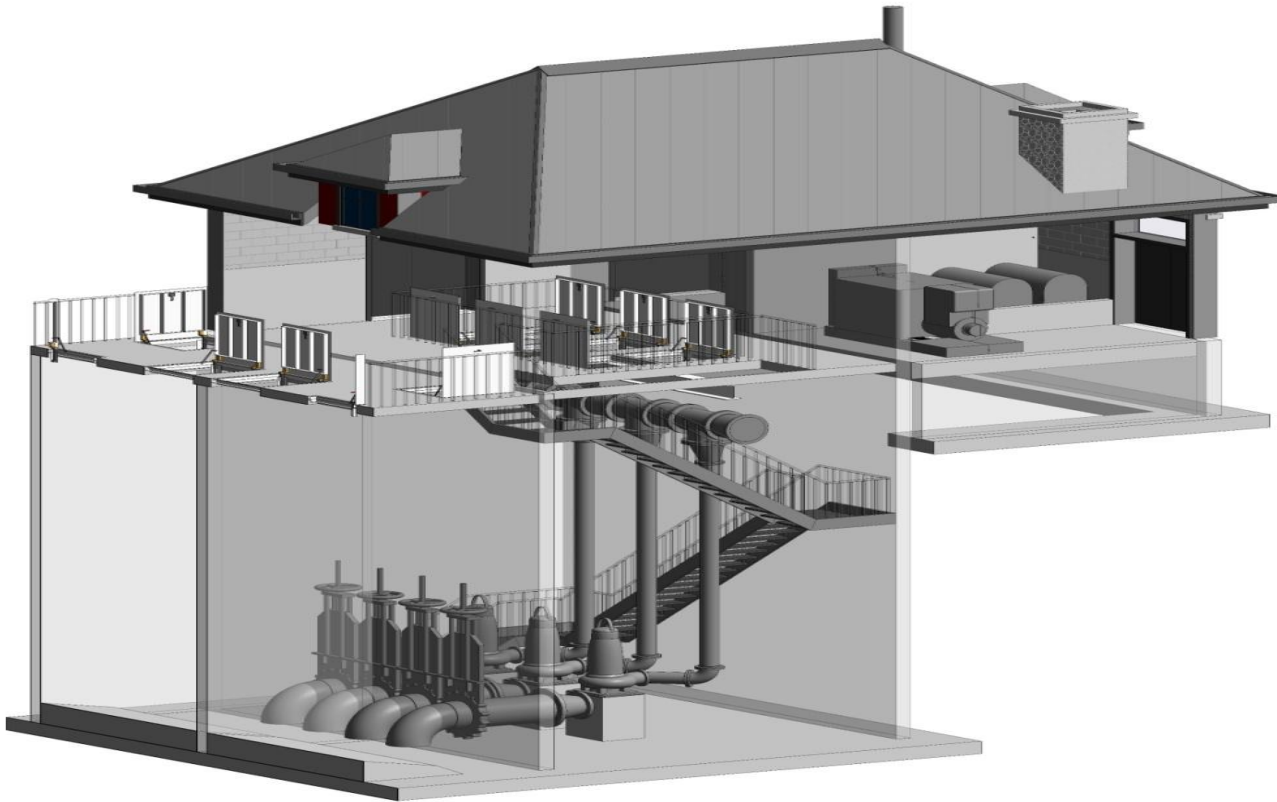
St. Charles Lift Station



St Charles Lift Station and Forcemain



St. Charles Lift Station Conceptual Design



Proposed Lift Station



Overall Project Budget

Estimated Project Cost = \$12.3M*

- Design, Inspection & Contract Administration
- Relocation of Museum Buildings
- Construction of Lift Station & Forcemain

** Preliminary design estimate*

Anticipated Project Schedule

- Relocate the Flour Mill Museum Buildings (2018 / 19)
- Replace the St. Charles Lift Station (2019 / 20)
- Install new forcemain to the Sewage Rock Tunnel (2019 / 20)

Museum Relocation Accomplishments to Date

Selected Site at O'Connor Park



Museum Relocation Accomplishments to Date

Museum Consultant

- Assessment of artifacts
- Developed a work plan for moving the artifacts

Museum Relocation

Accomplishments to Date

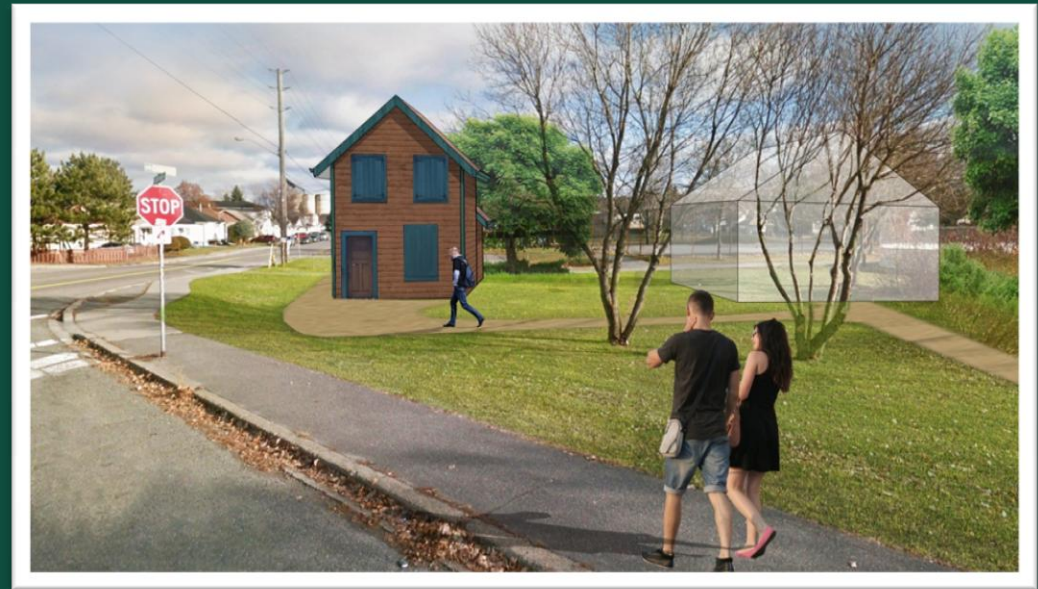
Design Phase - Conceptual Layout



Museum Relocation

Accomplishments to Date

Design Phase - Conceptual Layout



Next Steps

- Catalogue and move museum artifacts
- Explore storage options for museum artifacts
- Explore options for office building
- Community Information Session

Questions