

City of Greater Sudbury Emergency Management

Program Overview

Concept of Emergency Management

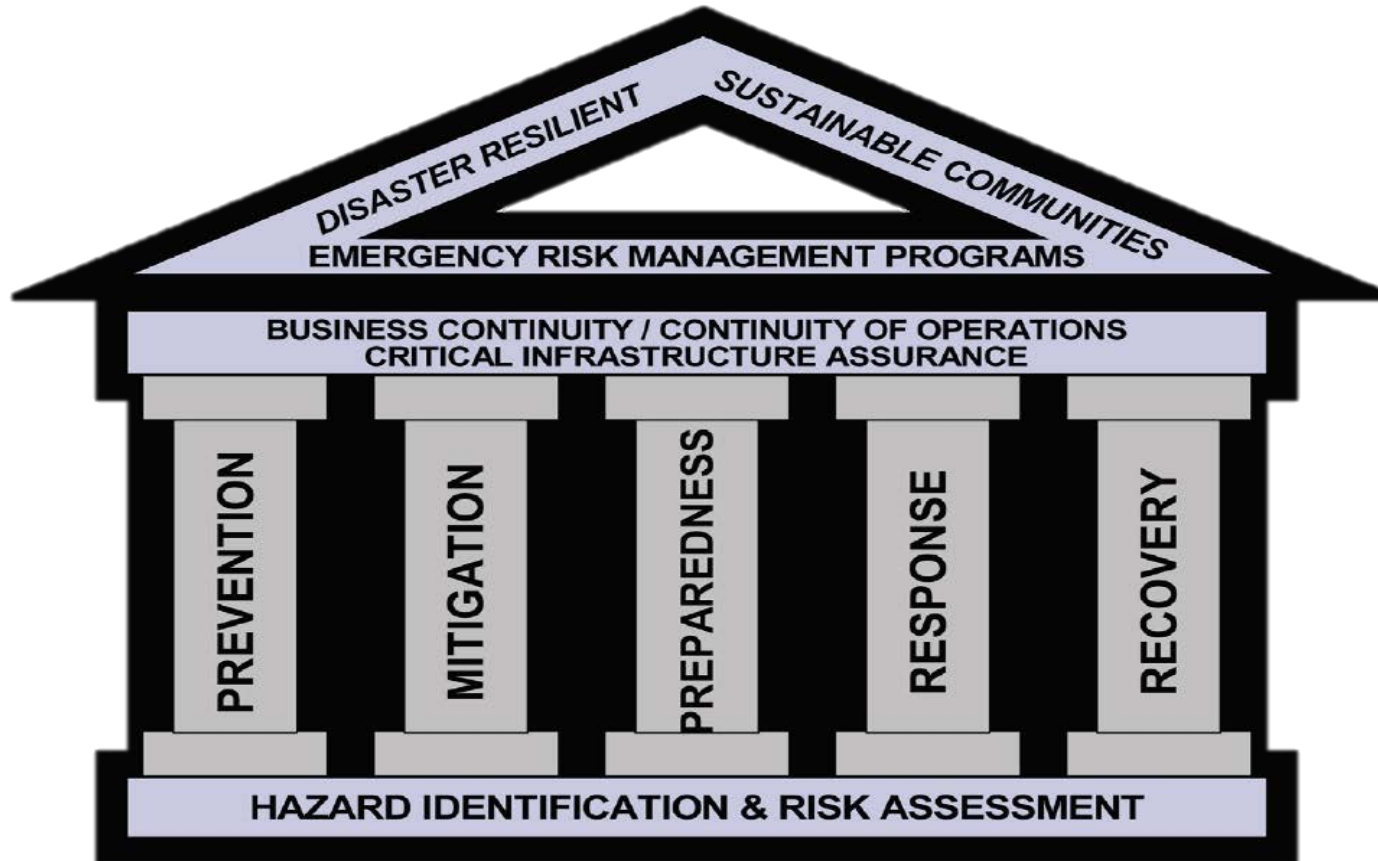
"The managerial function charged with creating the framework within which communities reduce vulnerability to hazards and cope with disasters"

**International Association of Emergency Managers*

"Organized activities undertaken to prevent, mitigate, prepare for, respond to, and recover from actual or potential emergencies"

**Ontario's Emergency Management Glossary of Terms*

Pillars of Emergency Management



** Image from Emergency Management Ontario*

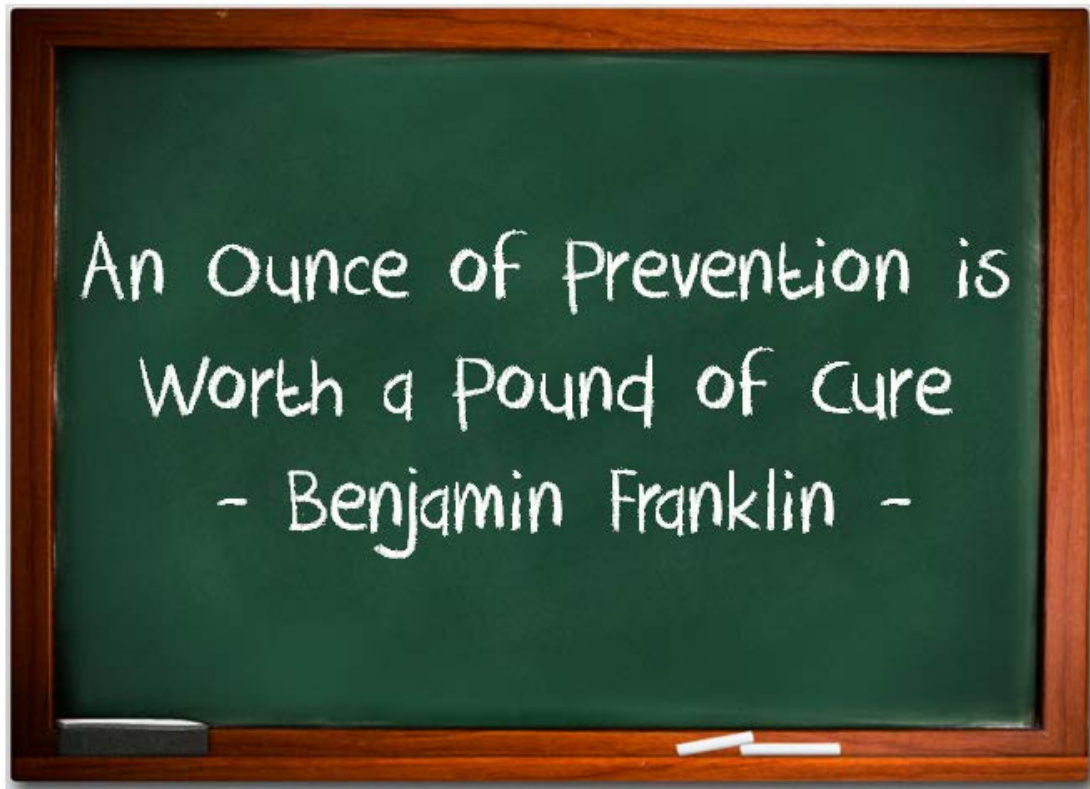
City of Greater Sudbury Emergency Management

- ▲ Corporate initiative
- ▲ Section located within the Community Safety Department under the direction of the Chief/GM of Community Safety
- ▲ Key component -
COLLABORATION



PREVENTION

Action taken to stop an emergency or disaster from occurring



PREVENTION - Legislation

Emergency Management in Ontario is:

- ▲ Responsibility of the Ministry of Community Safety and Correctional Services
- ▲ Falls within the Office of the Fire Marshal and Emergency Management
- ▲ Legislated by the Emergency Management and Civil Protection Act – 30 June 2006
- ▲ Regulation 380/04

PREVENTION – Identification of Critical Infrastructure



MITIGATION

Actions taken to reduce the adverse impacts of an emergency or disaster



MITIGATION - Hazards & Risks

▲ EVENT RATING - 2017

Event	Ranking
Hazardous Materials Incident – Fixed Site	15
Hazardous Materials Incident – Transportation	15
Tornados/ <u>Microbursts</u>	14
Human Health Emergencies	13
Energy Emergencies – Hydro	12
	(1=Low, 15=High)

MITIGATION - Response Capability

Greater Sudbury vs. Southern Ontario Cities

Land Area & Population Comparison

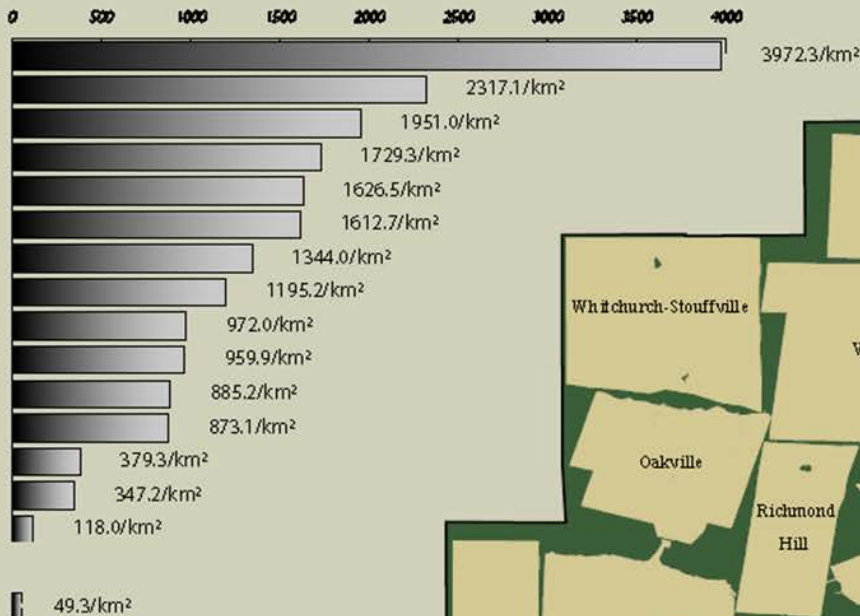
	Sq.Km	Pop.(2006)
Toronto	630.2	2,503,281
Mississauga	288.5	668,549
Newmarket	38.1	74,295
Orangeville	15.6	26,925
Brampton	266.7	433,806
Richmond Hill	100.9	162,704
Ajax	67.1	90,167
Oakville	138.6	165,613
Oshawa	145.7	141,590
Aurora	49.6	47,629
Burlington	185.7	164,415
Vaughan	273.6	238,866
Pickering	231.6	87,838
Grimsby	68.9	23,937
Whitchurch	206.7	24,390
Total (not incl. Sudbury)	2,707.5	4,854,005

Greater Sudbury 3,200.6 157,857

Greater Sudbury Infrastructure

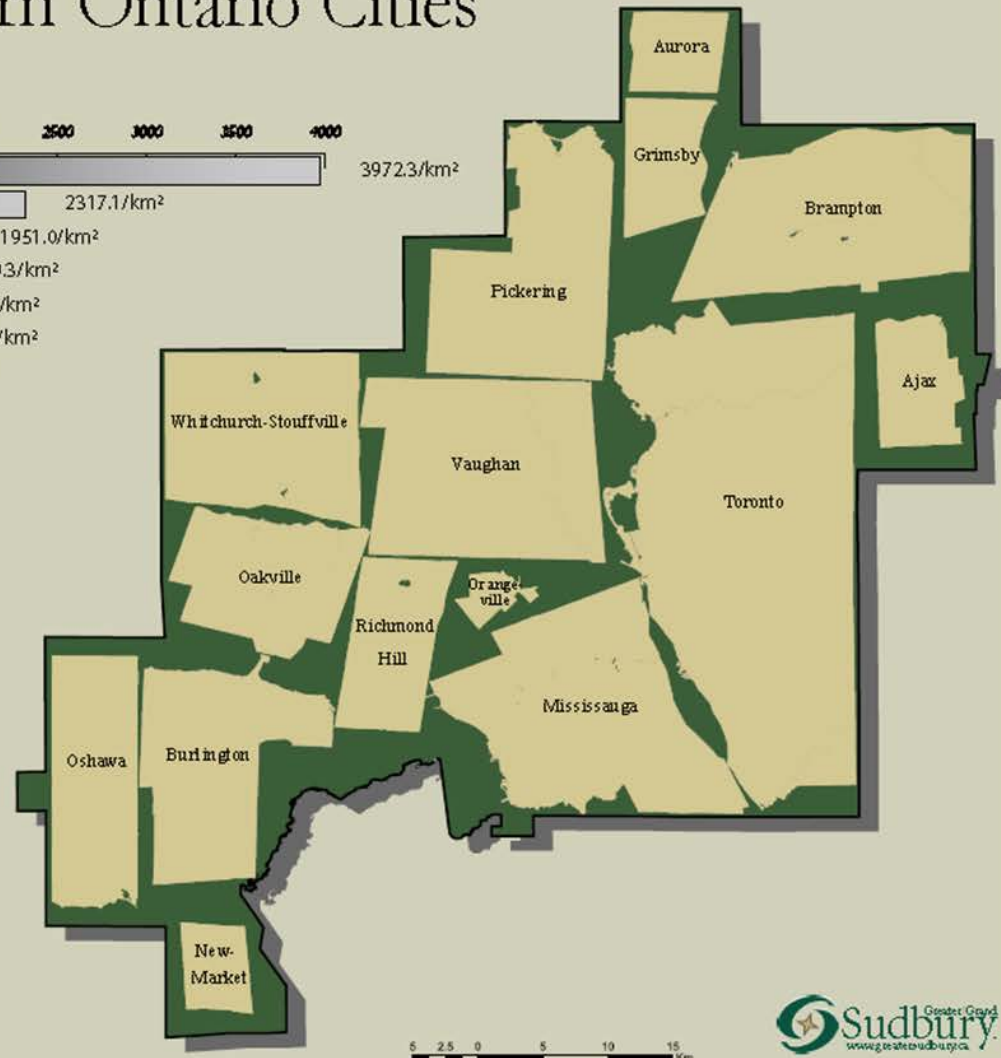
Road Lanes	3600+ km	Municipal Buildings	620
Water System	886 km	Ambulance Stations	11
Sanitary System	723 km	Citizen Service Centres	7
Arenas	14	Parks/Fields/Playgrounds	406
Libraries	13		
Lift Stations	75		
Fire Stations	25		
Lakes (over 10 ha.)	330		
Licensed Daycares	107		

Population Density Chart



■ Southern Ontario Cities

■ City of Greater Sudbury



0 2.5 5 10 15 Km

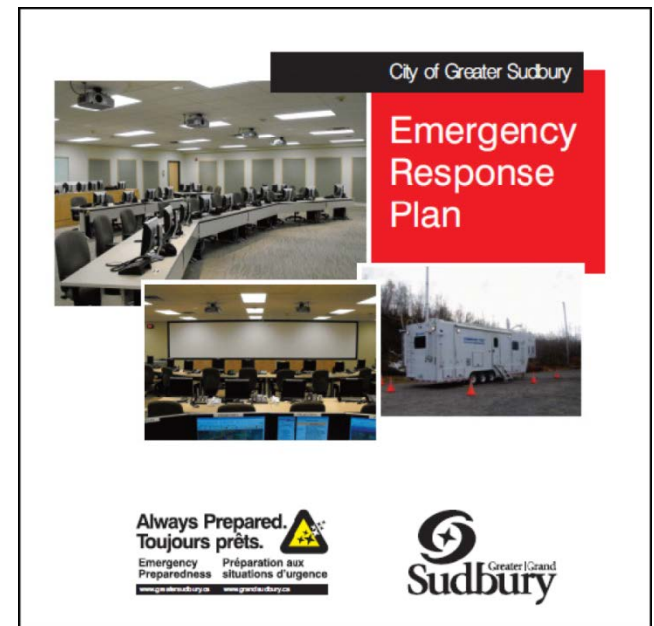
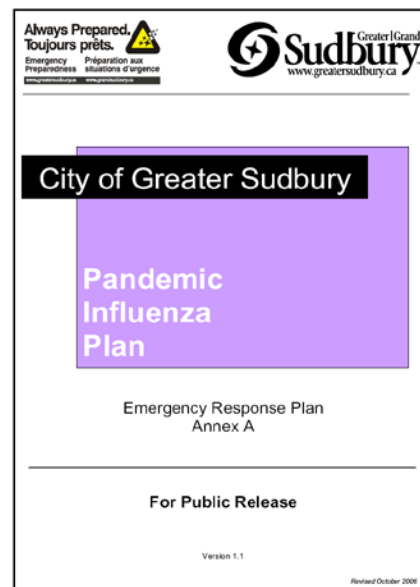
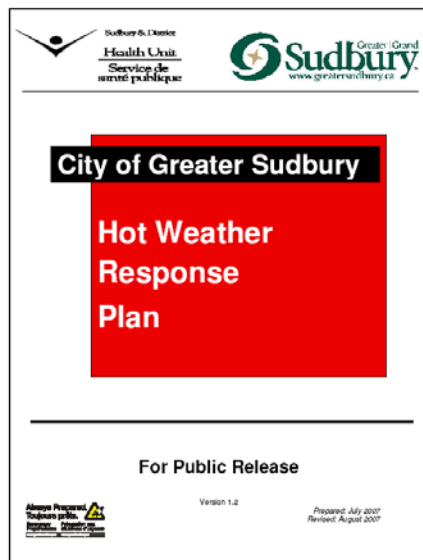
PREPAREDNESS

Actions taken prior to an emergency or disaster to ensure an effective response



PREPAREDNESS - Planning

- Both All Hazard and Hazard Specific Emergency Response Plans



PREPAREDNESS – Training & Exercise

- ▲ Legislation requires municipalities to conduct both training and exercises annually
- ▲ 2018 Tabletop Exercise



PREPAREDNESS - Communication

- ▲ Emergency warning systems as method of communicating information to the public



Sign up.
Get Notified.
Be prepared!



Inscrivez-vous.
Soyez avisé.
Soyez prêt!

www.greatersudbury.ca/sudburyalerts  www.grandsudbury.ca/alertesasudbury



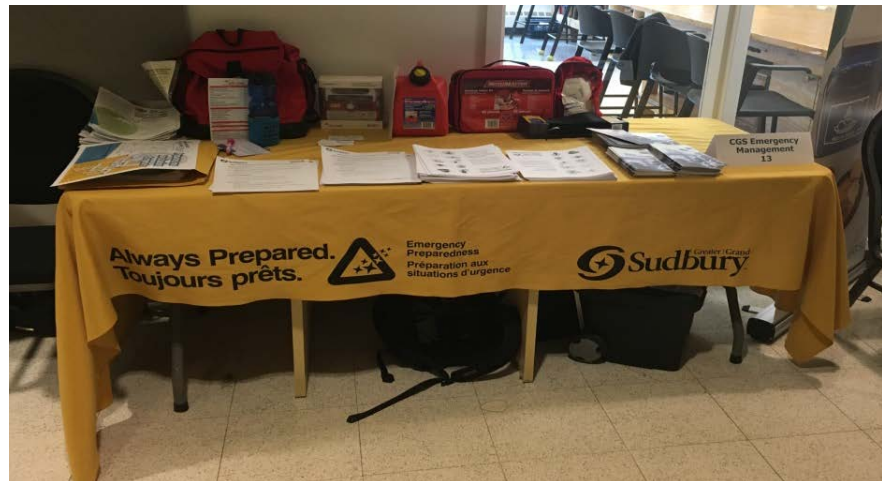
PREPAREDNESS - Public Awareness, Engagement & Education

Emergency Preparedness Week
May 6-12, 2018

Be Emergency Ready – Stay Connected



PREPAREDNESS - Public Awareness, Engagement & Education



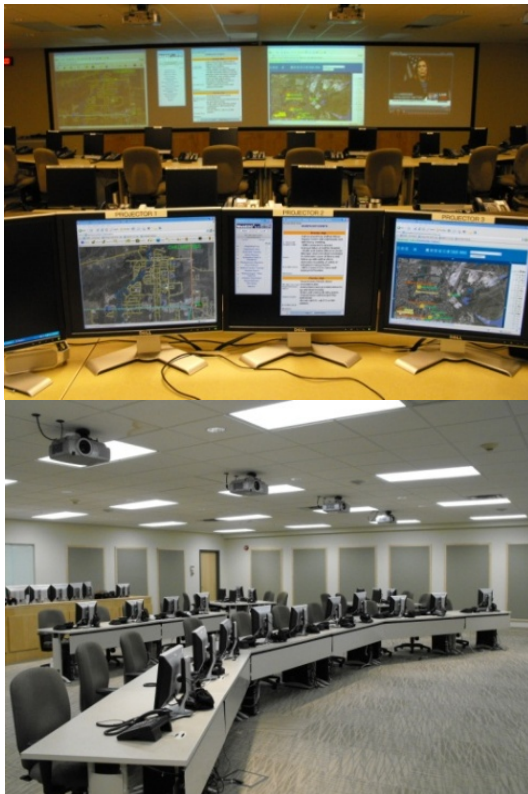
RESPONSE

Provision of emergency services and public assistance or intervention during or immediately after an incident in order to protect people, property, environment, economy, and/or services.



RESPONSE – EOC & MCU

Emergency Operations Centre



Mobile Command Unit



RECOVERY

Process of restoring a stricken community to a pre-disaster level of functioning



Future Initiatives

- ▲ IMS Implementation
- ▲ Public Education
- ▲ Broaden Sudbury Alerts
- ▲ Corporate Business Continuity Program

Thank You

Comments/Questions?