

Greater Sudbury Fire Services Water/Ice Rescue Program

City of Greater Sudbury
Emergency Services Committee
June 27, 2018



BACKGROUND FACTS

- 66% of drowning deaths, natural bodies of water
- Highest rates are men and older adults
- 64% Mid-May to late September

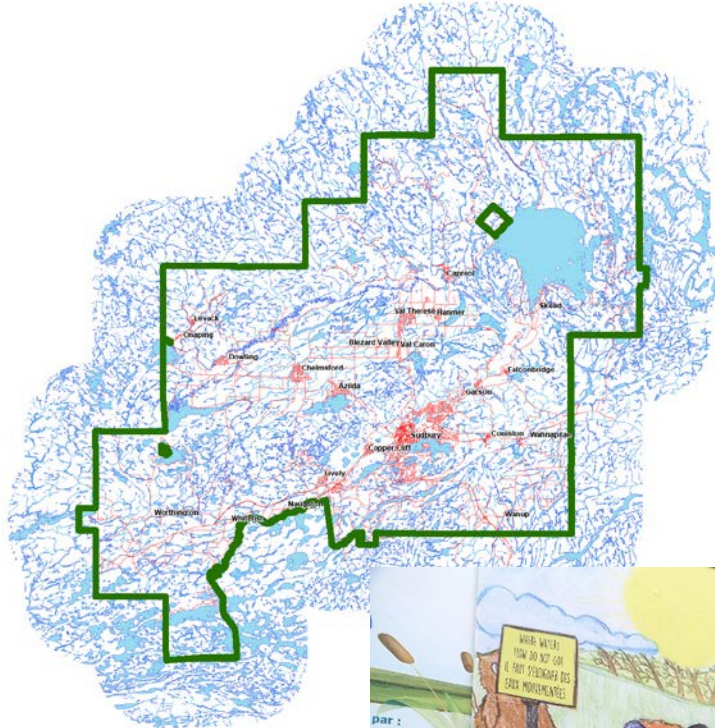


RISK FACTORS

- Not wearing a PFD (86%)
- Capsizing (37%)
- Alcohol (36%)
- Boating alone (30%)
- Falling overboard (29%)
- Snowmobiles



CITY OF GREATER SUDBURY



ENABLING BY-LAW

- By-Law 2014-84
- Four Components of Water Rescue

Water Shore Based

Water Surface

Swift Water

Ice and Cold Water

- Across all Fire Beats



NEW LEGISLATION

- Ontario Regulation 379/18, FPPA
- Mandatory certification to NFPA Standards
- Coroner's Inquest recommendations

Ice rescue training lacked safety measures, according to Ministry of Labour report on firefighter's death

Gary Kendall, 51, died during an ice and water rescue training exercise in Point Edward, Ont.

Two volunteer firefighters killed in Listowel, Ont.

By CHRISTINE DOBBY Staff Reporter
Fri., March 18, 2011

The OPP has identified two volunteer firefighters who died after responding to a blaze that ripped through a dollar store in the town of Listowel, Ont., Thursday afternoon.

The town's volunteer fire department, along with Ontario Provincial Police, responded to the fire at the store on Main St. W. shortly after 3:30 p.m., said OPP Const. Kees Wijnands.



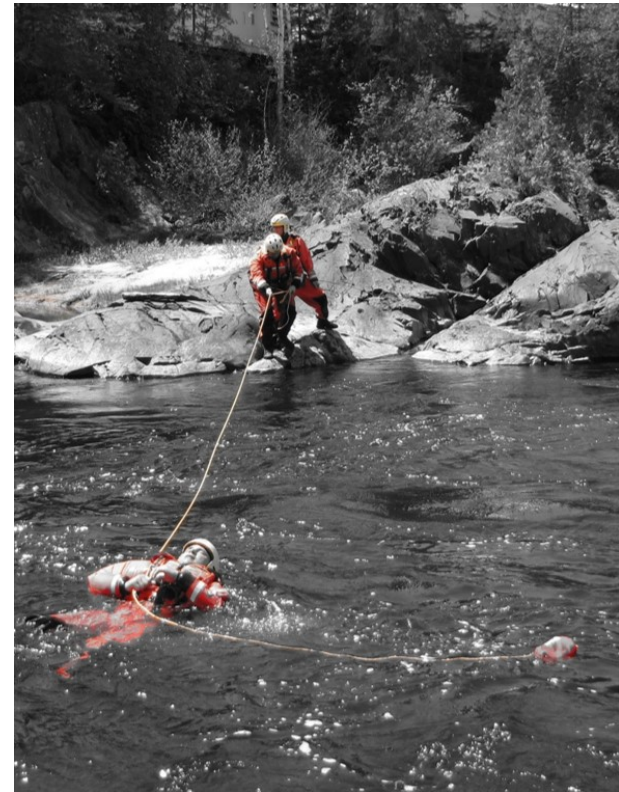
VESSEL LEGISLATION

- Canada Shipping Act and Regulations
- Operator and Crew certification
- “Authorized Representative”
- Workplaces under OHSA



CURRENT RESPONSE/TRAINING

- Enhanced level all Career
- Some Station 10 and 22 volunteers Enhanced level
- Awareness level all volunteer stations
- Protocol: 2 Career units and closest volunteer station



VESSEL FLEET

- 3 Zodiac boats on trailers
- RB22 (2005)



FLEET UPGRADING

- Appropriate to CGS wide response



HUMAN POWERED CRAFT



CONCLUSION

- Level of Response
- Compliant with Transport Canada
- Legislated Standards



QUESTIONS?

