



Sudbury is a Bicycle Friendly Community

Presentation by: The Share the Road Cycling Coalition



VISION

Share the Road envisions a future in which Ontario is the most bicycle friendly place in North America.

Share the Road contributes to making Ontario bicycle friendly through **Advocacy, Building Capacity, and Changing the Conversation.**

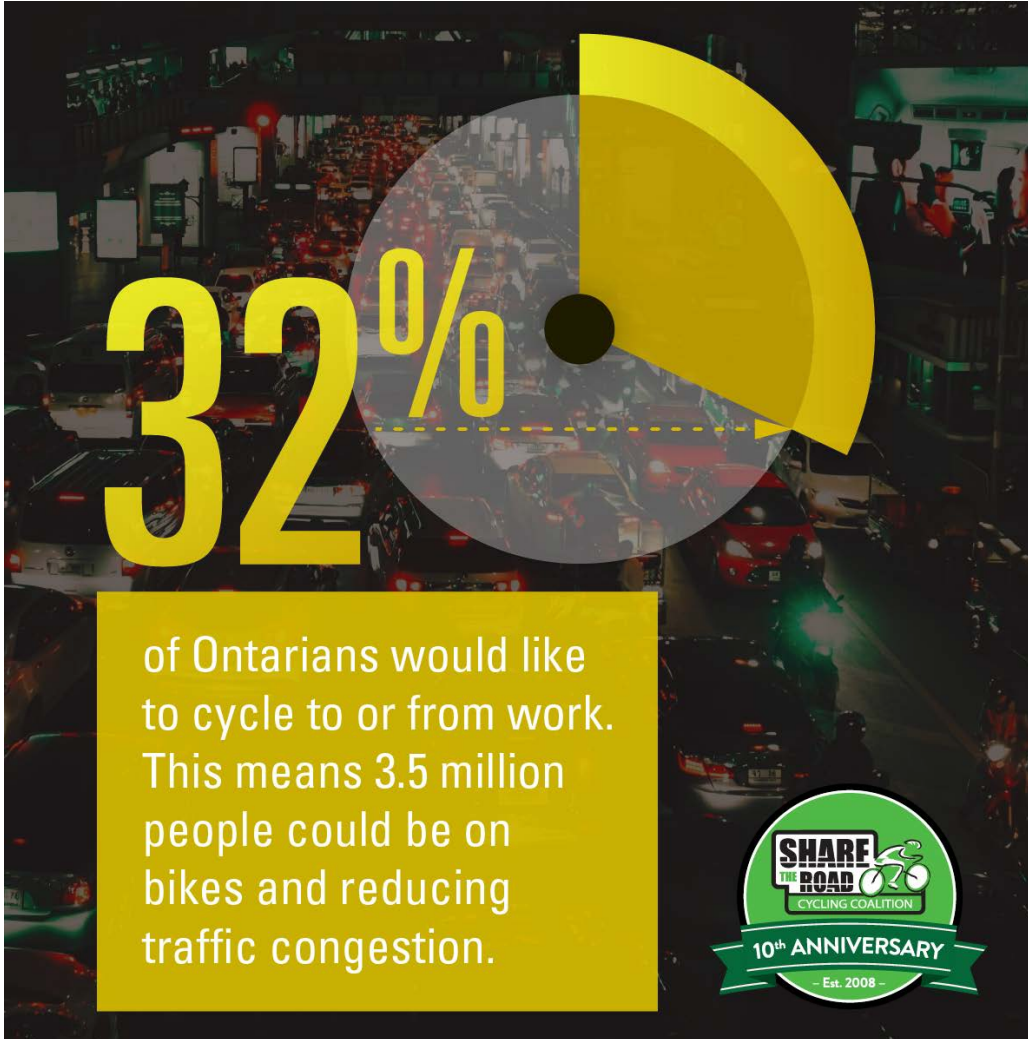
People cycling in Ontario

6% of Ontario residents cycling daily or almost daily

(7.1% in Northern Ontario)

(2018 Polling Results – Share the Road)

Demand for cycling in Ontario



Support for investments



67%

agree that the provincial government should invest in cycling infrastructure.



69.6% in Northern Ontario

Universal benefits for all residents

63% of Ontario residents believe that getting more people on bikes benefits everyone, not only those who cycle

(69.1% in Northern Ontario)

2018 Bicycle Friendly Communities in Ontario



The Bicycle Friendly Communities (BFC) Program helps communities become better places for people on bikes. A central theme of the BFC Program is the sharing of best practices among communities to help reduce the duplication of efforts and improve the overall quality of cycling programs in Ontario.

At the BFC Seminar, delegates will engage in in-depth discussions and activities that highlight emerging trends and quick wins. This year's Seminar focuses on providing delegates with a series of concrete actions that can be taken in the near term to improve cycling in their own community, shaped by the experiences of their peers from around Ontario.

- Greenbelt Route
- Great Lakes Waterfront Trail (GLWT)
- - - GLWT Proposed/Underway
- Voyageur Cycling Route (VCR)
- - - VCR Proposed/Underway
- Bicycle friendly communities
- ★ 2018 Winners

Elements of a BFC

Engineering



Education



Enforcement



Encouragement



**Evaluation and
Planning**



Sudbury: A Bronze BFC

Encouragement



Annual Share the Road rides (including Celebrate by Bike)

Education



Safe Cycling Awareness video

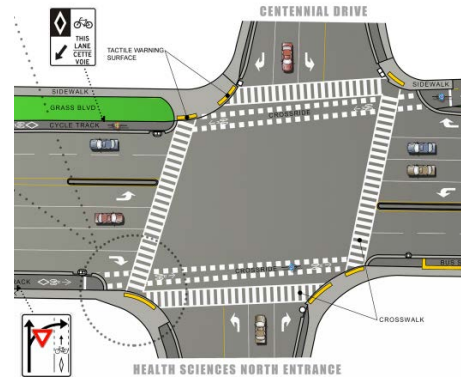
Sudbury: A Bronze BFC

Enforcement



Data sharing and positive ticketing campaigns

Engineering



Installation of cross-rides in several locations

Evaluation and Planning



Budget commitments in AT Plan and AT Coordinator



Great Lakes Waterfront Trail



WaterfrontTrail.org

- **Provincial Connection**
- **2600 km** signed + mapped route
- **140** Communities & First Nations

- Sudbury's **60 km** section (Belle River to Nairn) **Signage in Sudbury to be installed 2018**

Next Steps and Inspiration



Implement a **Complete Streets Policy** to ensure that are re-constructed or re-surfaced are improved for all modes



Focus on building **safe & connected infrastructure** along some of the city's arterial roads



Install **additional bike parking** spaces



Support local **non-profits to coordinate encouragement** events, as is successfully done in other Ontario communities