

## Request for Decision

### Acceptance of Waste Generated from Outside City Boundaries

Presented To: Operations Committee

Presented: Monday, Jun 19, 2017

Report Date: Wednesday, May 24, 2017

Type: Managers' Reports

### Resolution

THAT the City of Greater Sudbury permits campers/cottage owners located outside city boundaries to utilize City of Greater Sudbury waste disposal services on a full cost recovery system as outlined in the report entitled "Acceptance of Waste Generated from Outside City Boundaries" from the General Manager of Growth and Infrastructure, dated May 24, 2017.

### Relationship to the Strategic Plan / Health Impact Assessment

This report refers to operational matters.

### Report Summary

This report provides information on the process for the acceptance of waste generated from outside City boundaries and seeks approval to extend services to campers/cottagers on a full cost recovery system.

### Financial Implications

If approved, staff will investigate a plan that is full cost recovery, and report back at a later date. Therefore there are no financial implications associated with this report.

#### Signed By

**Report Prepared By**

Chantal Mathieu  
Director of Environmental  
*Digitally Signed May 24, 17*

**Health Impact Review**

Chantal Mathieu  
Director of Environmental  
*Digitally Signed May 24, 17*

**Manager Review**

Chantal Mathieu  
Director of Environmental  
*Digitally Signed May 24, 17*

**Division Review**

Chantal Mathieu  
Director of Environmental  
*Digitally Signed May 24, 17*

**Recommended by the Department**

Tony Cecutti  
General Manager of Growth and  
Infrastructure  
*Digitally Signed May 24, 17*

**Financial Implications**

Liisa Brule  
Coordinator of Budgets  
*Digitally Signed Jun 1, 17*

**Recommended by the C.A.O.**

Ed Archer  
Chief Administrative Officer  
*Digitally Signed Jun 5, 17*

**Background:**

In 2003, Council supported a staff recommendation on the process for the acceptance of waste generated from outside the boundaries of Greater Sudbury. The approval permitted the acceptance of waste generated by the Whitefish Lake First Nation and the Wahnapiatae First Nation but no other areas. The process is outlined in the 2003 report which is provided in Appendix A. All costs associated with the process, including negotiated costs for services would be on a full cost recovery basis.

On May 24, 2017, staff received a request from Atikameksheng Anishnawbek (the former Whitefish Lake First Nation). This request is provided in Appendix B and seeks to collaborate on various solid waste management services. Staff will commence this planning process and will report back to the Council following the public notice and commenting period and once program/agreement details are finalized.

Staff has also received similar requests from campers/cottagers with properties located outside City boundaries and not within the two above noted First Nation communities. In order to proceed with their request, staff requires approval from Council to consider these requests. If approval to proceed is granted, staff would report back at a later time with additional details. All services would be developed as a full cost recovery system with no financial impact to the City.

# Request for Decision City Council



## Type of Decision

Meeting Date	July 8, 2003				Report Date	July 2, 2002			
Decision Requested	<input checked="" type="checkbox"/>	Yes		No	Priority	<input checked="" type="checkbox"/>	High		Low
	Direction Only				Type of Meeting	<input checked="" type="checkbox"/>	Open		Closed

## Report Title

Acceptance of Solid Waste from Whitefish Lake First Nation

### Policy Implication + Budget Impact

This report and recommendation(s) have been reviewed by the Finance Division and the funding source has been identified.

No financial impact.

☒

Background Attached

### Recommendation

That the City of Greater Sudbury accept solid waste from First Nation Lands within the boundaries of the City and as outlined in Appendix A of this report, subject to the payment of tipping fees; and that

The City of Greater Sudbury not accept garbage generated from any area outside the City's boundaries.

Recommendation Continued

### Recommended by the General Manager

D. Bélisle,  
General Manager of Public Works

### Recommended by the C.A.O.

J. Minto,  
Chief Administrative Officer

Date: July 2, 2003

## Report Prepared By

C. Mathieu,  
Manager of Waste Management

## Division Review

Neegan Burnside Engineering and Environmental Ltd. is currently assisting the Whitefish Lake First Nation in developing a long term solid waste management plan. An option that they want to review is the possibility of shipping the waste to a City of Greater Sudbury landfill site.

Whitefish Lake First Nation is located approximately 15 kilometers south west of Sudbury, near Naughton (refer to Appendix A). The small village currently has a population of 340 and currently generates 224 tonnes of waste per year (equivalent to approximately 22 rear garbage packers or approximately .2% of all the garbage disposed at our landfill sites per year).

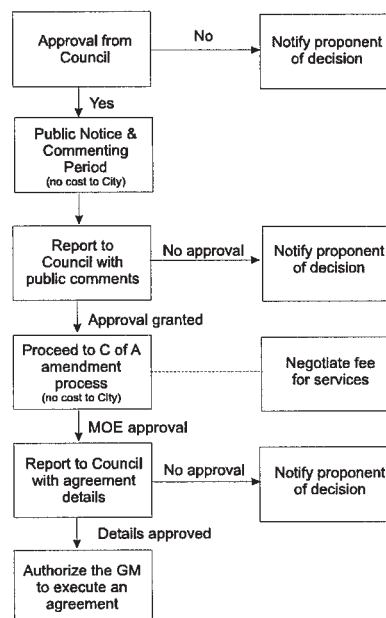
Due to the geographical location of the Whitefish Lake First Nation, staff is in the opinion that providing assistance would not be detrimental to the City. Any services provide would be at no cost to the City and could perhaps be developed as a new revenue generating opportunity.

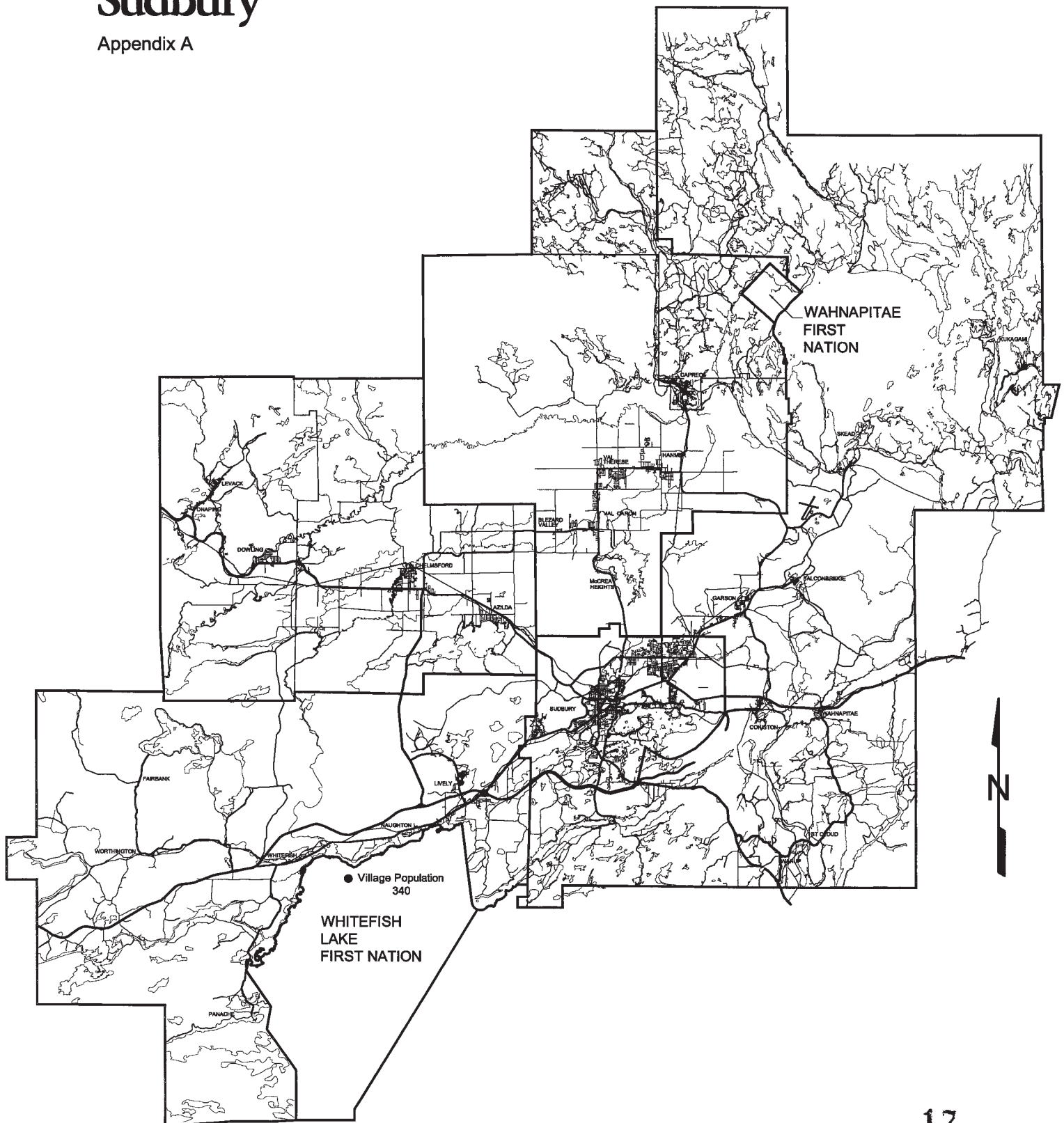
If the Wahnapiatae First Nation were also to approach the City with a similar request, staff would also want approval to proceed in the same manner as directed by Council for the Whitefish Lake First Nation.

In summary, staff is proposing the following options for Council consideration:

- 1) Accept no garbage generated outside the boundaries of the City for disposal at our landfill sites;
- 2) Consider acceptance of garbage for disposal at our landfill sites from any area outside the City on a case by case basis (not recommended by staff).
- 3) Only consider acceptance of waste from the Whitefish Lake and Wahnapiatae First Nation as detailed in the following flow chart:

Staff recommends that we limit the acceptance of garbage to First Nation Lands within the boundaries of the City and as detailed in Appendix A.







**Atikameksheng  
Anishnawbek**

25 Reserve Road  
Naughton, ON  
P0M 2M0

Telephone: (705) 692-3651  
Fax: (705) 692-5010

Web Site:  
[www.atikamekshenganishnawbek.ca](http://www.atikamekshenganishnawbek.ca)

**CHIEF**

Steve Miller

**COUNCILLORS**

Monica Homer  
Lesley MacNeil  
Wayne Nebenionquit  
Harvey Petahtegoose  
Lisa Wabegijig  
Steven Nootchtai  
Douglas Nootchtai

**SENIOR MANAGEMENT**

Jeanne Naponse  
Director of Operations

Vacant  
Director of Finance

Vacant  
Director of Community Planning  
and Infrastructure

Carmen Wabegijig-Nootchtai  
Director of Health & Community  
Wellness

*Our File No.*

*Your File No.*

May 24, 2017

Chantal Mathieu  
Director of Environmental Services/  
Environmental Services Division  
1805 Frobisher Street  
Sudbury, Ontario  
P3A 6C8

Dear Chantal;

As a follow-up to our meeting with you on Tuesday, May 16, 2017, we are writing to request services with the City of Greater Sudbury for our community, Atikameksheng Anishnawbek, on the following waste management issues:

1. Access to the nearby transfer station for our 4 Ojibway Road Residents and members of the Ojibway Campers Association and other cottagers who have leased land from us on Penache Lake.
2. Access to the City's solid waste management sites including the Walden Waste Transfer Site and the Sudbury Landfill & Waste Diversion Site, the Household Hazardous Waste Depot and the Recycling Centre.
3. Meet to review joining the City's roadside collection and/or depot collection program

Our community will cover the process costs associated with the City's requirement to make these changes and the service fees for negotiated services.

Miigwetch,

Darin Migwans,  
Public Works Manager

Cc: Jeanne Naponse  
Chief and Council, Atikameksheng Anishnawbek  
Enclosure