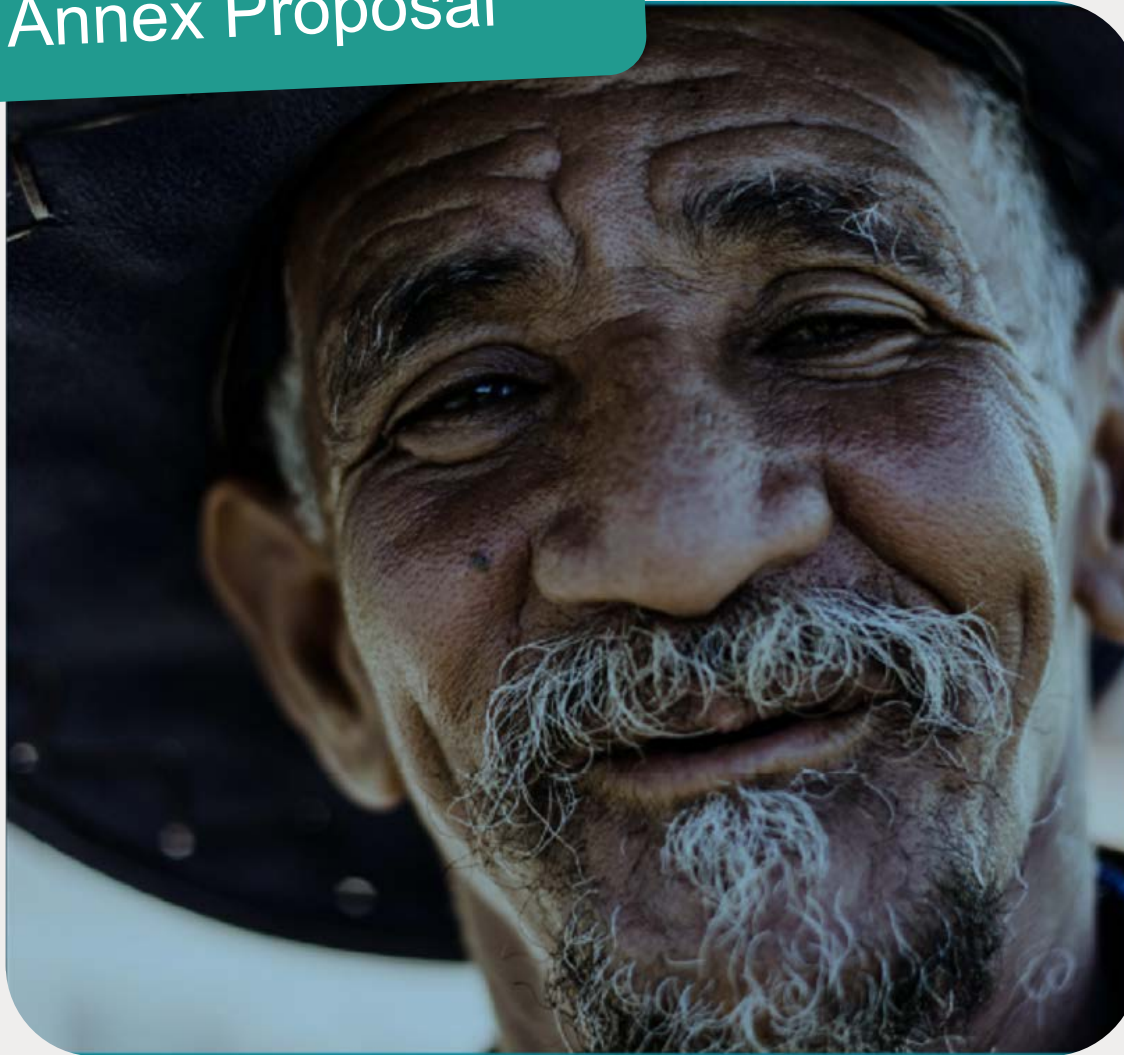


CMHA Sudbury/Manitoulin's The Annex Proposal



Canadian Mental
Health Association
Mental health for all

Association canadienne
pour la santé mentale
La santé mentale pour tous

May 30, 2017

The Annex (200 Larch St.) Proposal

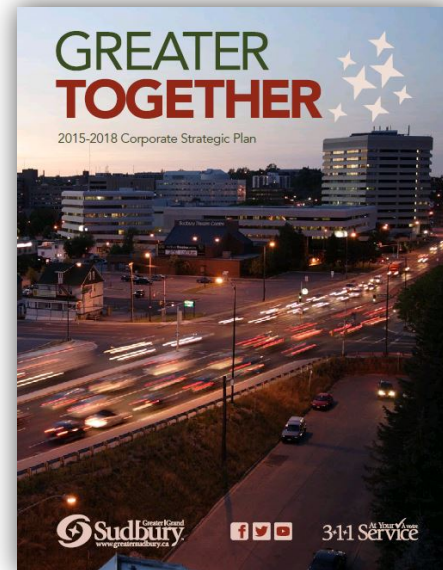
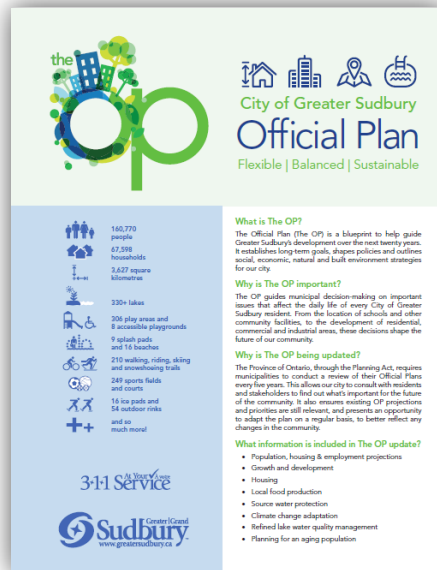
Today's Request

- For City Council to transfer ownership of 200 Larch Street to CMHA Sudbury/Manitoulin
- Use 200 Larch Street as a permanent location for Off the Street (OTS) Emergency Shelter and Harm Reduction Home (HRH)
- Develop a downtown Community Hub on the main floor
- For the City to endorse Home for Good capital funding request in the amount of \$2,250,000



Supports City of Greater Sudbury's Corporate Strategy

- ✓ HRH and OTS are initiatives that follow the City's Corporate Strategic Plan and the Ten Year Housing and Homelessness Plan



The Annex (200 Larch St.) Proposal

Current Building



The Annex (200 Larch St.) Proposal

After Renovations



Business Plan Overview

- ✓ Estimated cost of 4 million dollars in capital to renovate building to meet the programs' needs
- ✓ City would be a partner with CMHA through the granting of the building and Home for Good funding
- ✓ Operating budget of 1 million dollars annually, for HRH, will come from the North East Local Health Integration Network (LHIN)
- ✓ Operating budget of approximately \$300,000 (for the season) for OTS Emergency Shelter will come from the City



Target Population

Off The Street Shelter:

- ✓ Any gender, 16 years of age and older
- ✓ Homeless or at risk of homelessness
- ✓ Individuals who may be disconnected, restricted or otherwise ineligible for existing shelter services, including reasons related to zero alcohol tolerance.

Harm Reduction Home Program:

- ✓ Any gender, 19 years of age and older
- ✓ Chronic substance use disorder
- ✓ High user of emergency services



CMHA Sudbury/Manitoulin's Proven Experience

Harm Reduction Home (HRH, operating since December 2015):

The HRH Day Program provides access to a managed alcohol program (MAP) in the form of a day treatment program. Individuals are supported in accessing housing, and addressing primary care and mental health needs.

- ✓ Currently operates as a day program at 200 Larch St. (temporary)
- ✓ Dedicated operational funding of 1 million dollars annually, provided by the North East LHIN
- ✓ Permanent location allows expansion to a 15 participant residential program
- ✓ Residential component of the MAP and the stability of housing and 24 hour support to individuals is paramount to the longer term success and outcomes for participants (University of Victoria research)

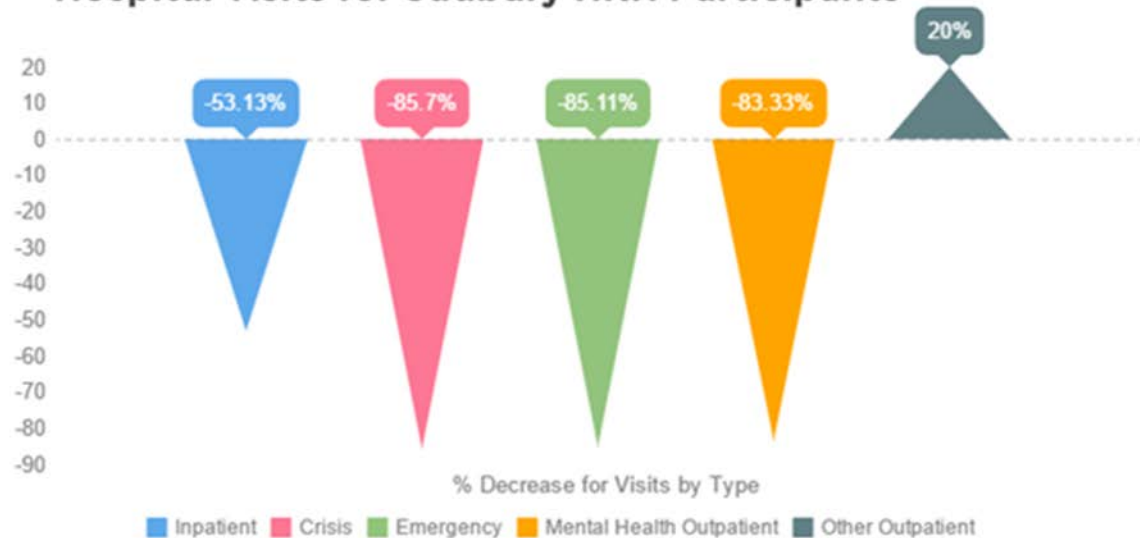


CMHA Sudbury/Manitoulin's Proven Experience

Harm Reduction Home (HRH) Outcome 1:

Reduced Emergency Department visits, hospitalizations, police involvement and EMS use

Hospital Visits for Sudbury HRH Participants*



15



2

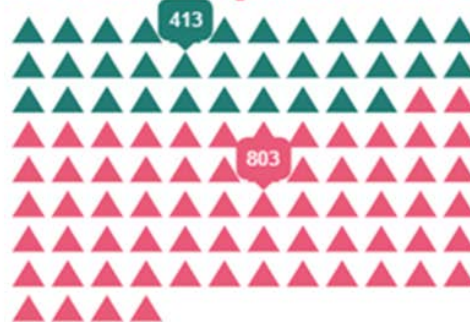
Calls from HRH Since April 1st, 2016

CMHA Sudbury/Manitoulin's Proven Experience

Harm Reduction Home (HRH) Outcome 2:

Improvements in the health and well-being of program participants

66% Voluntary Attendance



77% Decrease in Withdrawal Management Visits



CMHA Sudbury/Manitoulin's Proven Experience

Harm Reduction Home (HRH) Outcome 3:

Individuals transitioned to more stable supportive housing



Total HRH Participants since Start of Program (December 2015)	12
Participants Discharged	3
Graduated Participants	1
Participants Housed	10

CMHA Sudbury/Manitoulin's Proven Experience

Off the Street Emergency Shelter (OTS):

Formerly known as Out of the Cold, OTS is a low-barrier emergency shelter, geared to men, women and unidentified individuals who are over 16 years of age and do not have permanent housing.

This low barrier emergency shelter program provided cots and a safe warm place for persons who were under the influence or otherwise disconnected from mainstream shelter services. Low barrier refers to a shelter where a minimum number of expectations are placed on people who wish to stay there.

-
- ✓ Operates under funding agreement with CGS, at 200 Larch Street
 - ✓ Provides access/facilitates connections to permanent housing
 - ✓ Potential for extended program to 12 months of the year



CMHA Sudbury/Manitoulin's Proven Experience

Off the Street Emergency Shelter (OTS): Identified Need

November 28, 2016 to April 16, 2017

- ✓ 291 uniquely identified individuals occupied a bed (230 males, 60 female, 1 transgender)
- ✓ 28.06 beds used per night
- ✓ 3,900 beds occupied during the shelter season

Age Group	Uniquely Identified Individuals
Under 18	11
18-24	51
25-34	92
35-44	65
45-54	39
55-64	26
65+	7

Aboriginal/Non-Aboriginal Status	Uniquely Identified Individuals
First Nations –On Reserve	2
First Nations - Off Reserve	132
Inuit	1
Métis	3
Non Aboriginal	146
Non Status	3
Unknown	4

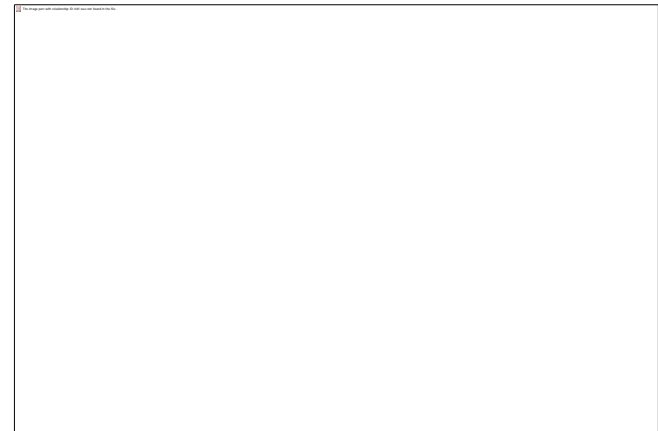


CMHA Sudbury/Manitoulin's Proven Experience

Off the Street Emergency Shelter (OTS): Outcomes

November 28, 2016 to April 16, 2017

- ✓ Average of 57 people used the shelter services nightly
- ✓ Average of 28 used a bed
- ✓ 6,800 total visits to shelter, including 3,900 overnight stays
- ✓ 1354 referrals to 42 community agencies
- ✓ Housing found for 36 individuals, therefore 12% of shelter users



Location: Why go back to the Annex?

- ✓ New Provincial capital funding opportunities make it affordable
- ✓ Business plan and functional space plan completed
- ✓ Enhances support to the downtown
- ✓ Creates a safe and supportive downtown service
- ✓ Offers larger space for community hub (multiple services)
- ✓ Familiar for individuals



The Annex (200 Larch St.) Proposal

Larch St.

- ✓ Will create outdoor space and beautify the location
- ✓ Familiar to community
- ✓ Close proximity to other programs and services
- ✓ Potential environmental issues
- ✓ Excellent location to develop a community hub



Lourdes St.

- ✓ More outdoor space
- ✓ Less visible and may be difficult to find
- ✓ Access may be more limited
- ✓ Unsure of environmental issues
- ✓ Smaller facility so couldn't offer community hub model



16



Safety: Community and Program Participants

- ✓ HRH has reduced police calls for participants, which allows police to respond to calls in the broader community
- ✓ Site will be staffed 24 hours a day, seven days a week
- ✓ For HRH, this includes round-the-clock support by Residential Workers, Registered Practical Nurses, Case Managers and a Recreation Therapist
- ✓ For OTS, there are 3 CMHA staff members per night as well as 2 security guards that ensure the safety of the individuals, staff and property



Option 1: Home for Good Capital Funding Plan

- ✓ CMHA has partnered with the City to submit a proposal for Home for Good funding
- ✓ Requesting \$2,250,000 for Harm Reduction Home building renovations
- ✓ CMHA would access funding for the remainder of the renovation, this would be done through financing.



Contingency: CMHA Capital Funding Plan

If Home for Good funding is unsuccessful, CMHA would seek additional funding from other sources such as:

- ✓ Bank mortgage
- ✓ Capital campaign
- ✓ CMHA reserve funds
- ✓ Grants
- ✓ Private investors



Community Hub Opportunity

Community HUBs are about bringing together multiple services to meet local needs through collective impact and integrated service delivery. They:

- ✓ Improve client experience and simplify navigation
- ✓ Build capacity through collaboration and efficiencies
- ✓ Enhance financial sustainability of organizations from all sectors (publicly funded, private, NFP)
- ✓ Coordinate land use for local planning
- ✓ Leverage private sector partnerships
- ✓ Streamline services to reduce operating costs and increase resources available for service



Possible Community Hub Partners

- ✓ CMHA Harm Reduction Home
- ✓ CGS Off the Street Emergency Shelter
- ✓ Indigenous Healing Space
- ✓ Primary Health Care



The Annex (200 Larch St.) Proposal

Today's Request

- For City Council to transfer ownership of 200 Larch Street to CMHA Sudbury/Manitoulin
- Use 200 Larch Street as a permanent location for Off the Street (OTS) Emergency Shelter and Harm Reduction Home (HRH)
- Develop a downtown Community Hub on the main floor
- For the City to endorse Home for Good capital funding request in the amount of \$2,250,000



Questions?

Marion Quigley, Chief Executive Officer
Canadian Mental Health Association
111 Elm Street, Suite 100
Sudbury, ON P3C 1T3

mquigley@cmha-sm.on.ca

