

# CMHA Sudbury/Manitoulin's Lourdes Street Proposal



Canadian Mental  
Health Association  
*Mental health for all*

Association canadienne  
pour la santé mentale  
*La santé mentale pour tous*

### Today's Request

- To ask the City to transfer ownership of 291 Lourdes Street Sudbury to CMHA S/M for nominal consideration
- Use 291 Lourdes Street as a permanent location for Off the Street (OTS) Emergency Shelter and Harm Reduction Home (HRH)
- To give committee an overview of the Harm Reduction Home program currently run by CMHA



# Target Population

## Off The Street Shelter:




- ✓ Any gender, 16 years of age and older
- ✓ Homeless or at risk of homelessness
- ✓ Individuals who may be disconnected, restricted or otherwise ineligible for existing shelter services, including reasons related to zero alcohol tolerance.

## Harm Reduction Home Program:

- ✓ Any gender, 19 years of age and older
- ✓ Chronic substance use disorder
- ✓ High user of emergency services

### Demonstrated Success

HRH has proven to:

-  **#1** Reduce Emergency Department visits, hospitalization, police involvement and EMS use
-  **#2** Deliver improvements in the health and well-being of program participants
-  **#3** Transition individuals to more stable supportive housing

See video of successful harm reduction program:

<http://www.cbc.ca/fifth/episodes/2016-2017/the-pour-treating-alcoholics-with-wine>



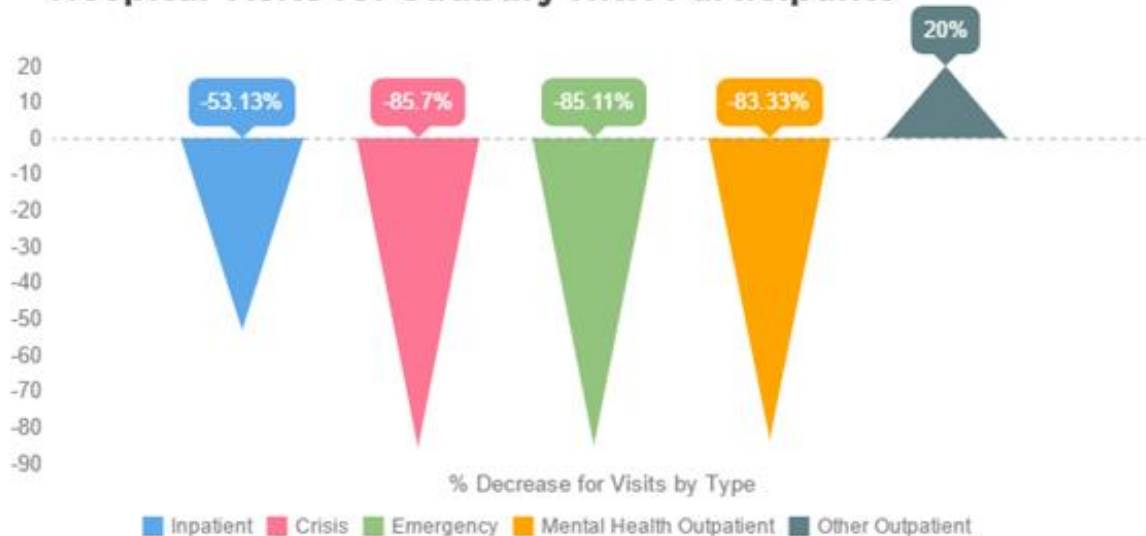
## Demonstrated Success



To reduce Emergency Department visits, hospitalizations, police involvement and EMS use

*Nine months before and after comparison:*  
ED visits dropped 215 to 32 – An estimated cost savings of \$50K for ED visits alone

Hospital Visits for Sudbury HRH Participants\*



15



2

Calls from HRH Since April 1st, 2016



Canadian Mental  
Health Association  
*Mental health for all*

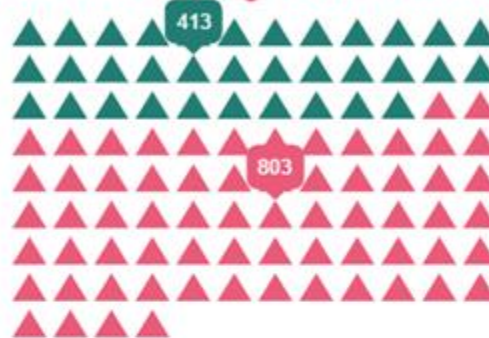
Association canadienne  
pour la santé mentale  
*La santé mentale pour tous*

## Demonstrated Success



Deliver improvements in the health and well-being of program participants

### 66% Voluntary Attendance



ORGANIZED	81
TOTAL SESSIONS	
ATTENDED	28
PER PARTICIPANT	

SOCIAL SESSIONS

### 77% Decrease in Withdrawal Management Visits





## Demonstrated Success



Transition individuals to more stable supportive housing



3 Individuals Remaining to be Housed.

## CMHA S/M's Proven Experience

- ✓ CMHA S/M is a branch of a national non-profit organization that has provided supportive housing and mental health services for 32+ years
- ✓ Proven leadership in the role of housing and homelessness in Sudbury and Manitoulin District
- ✓ Demonstrated leadership managing transformational relationships like the Harm Reduction Home program





## CMHA S/M's Proven Experience

### Harm Reduction Home (HRH):

- ✓ CMHA-S/M's HRH currently operates as a day program at 200 Larch Street (temporary location)
- ✓ Dedicated operational funding provided by the North East LHIN
- ✓ Permanent location will expand program to a 15 participant residential program



## CMHA S/M's Proven Experience

### Off The Street (OTS) Emergency Shelter:

- ✓ CMHA S/M operates under funding agreement with CGS: 200 Larch Street (temporary location)
- ✓ Provides access / facilitates connections to permanent housing
- ✓ Collaborates with community outreach and homelessness network
- ✓ On average provides overnight beds for 30 people/night
- ✓ Permanent / co-location with HRH will provide additional hours and extended 12 month program

# Community Backing

### Letters of support endorse the program:

- Mayor Brian Bigger, City of Greater Sudbury
- Dr. Mike Franklyn, Primary Care Physician
- Dinah Laprairie, ED, Northern Initiative for Social Action (NISA)
- Dr. Penny Sutcliffe, Medical Officer of Health, District Health Unit
- Dr. Roger Strasser, Dean and CEO, Northern Ontario School of Medicine
- Paul Pederson, Chief of Police, Greater Sudbury Police Services
- Debbi Nicholson, President & CEO, Greater Sudbury Chamber of Commerce
- Dominic Giroux, President and Vice-Chancellor, Laurentian University
- Father Brian Dixon, Pastor, Church of Christ the King
- Dr. Denis Roy, President and CEO, Health Sciences North
- Bill Best, President, Cambrian College
- Pierre Riopel, President, Collège Boréal



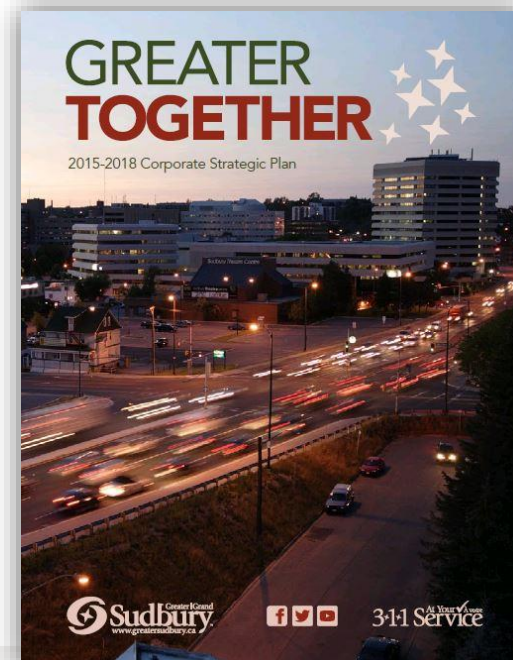
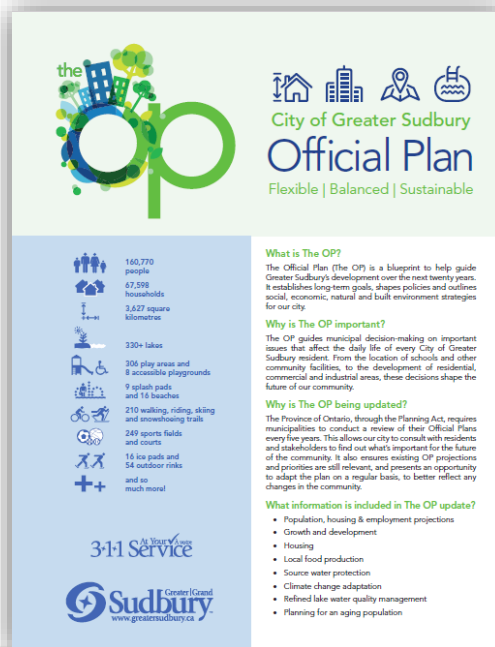
## Supports CGS 10 year Housing & Homelessness Plan

- ✓ There is a need to strengthen approaches to preventing homelessness, increase the diversity of emergency shelter options and support individuals with multiple barriers in obtaining and maintaining their housing
- ✓ There is a need for additional supportive services coupled with permanent housing (both supportive housing and supports in private homes)
- ✓ There is a need to improve co-ordination, collaboration and partnerships among a broad range of stakeholders



# Supports City of Greater Sudbury's Corporate Strategy

- ✓ Both OTS Emergency Shelter and HRH are initiatives that follow the strategic plan for our city and support the City's Corporate Strategy



# NELHIN Innovative Housing with Health Supports in Northeastern Ontario

- ✓ Strategic Plan Recommendation Goal #3, Objective #5
- ✓ *Where managed alcohol programs are implemented across the NE to deal with the chronic homeless issue crossing over the housing and health continuum, the shelter component be prioritized by the DSSABs and the City of Greater Sudbury, and the supports funded by the NE LHIN*



### Ideal Location

291 Lourdes Street:

- ✓ Offers proximity to downtown services and supports
- ✓ Is a residential area – will not impact downtown businesses
- ✓ Allows for the creation of a private, safe outdoor space for participants





### Anticipated Renovations

- ✓ Estimated cost of \$3M to renovate building to meet programs needs
- ✓ Funding for renovations will come from alternate sources (grants, borrowing against existing housing stock). There will be no request to the City for funding to assist with renovations
- ✓ Functional space plan completed
- ✓ City would be a partner with CMHA through the donation of the building
- ✓ Operating budget will come from NE LHIN for the HRH and CGS for OTS Emergency Shelter



## National Research Study – MAPs

- ✓ University of Victoria, BC
- ✓ Studies include: Toronto, Edmonton, Ottawa, Halifax, Hamilton, Vancouver, Thunder Bay & Sudbury
- ✓ Quantitative and qualitative study on individuals with severe Alcohol Use Disorder (AUD) and homelessness
- ✓ Impact on physical and mental health, housing satisfaction and stability, patterns of alcohol use and related harms and trajectories through health care and criminal justice systems



## HRH Programs in Ontario

- ✓ Ottawa – Shepherds of Good Hope & The Oaks
- ✓ Hamilton – Claremount House
- ✓ Thunder Bay – Kwae Kii Win Managed Alcohol Centre
- ✓ Toronto – Seaton House



# Questions?

Marion Quigley, Chief Executive Officer  
Canadian Mental Health Association  
111 Elm Street, Suite 100  
Sudbury, ON P3C 1T3

[mquigley@cmha-sm.on.ca](mailto:mquigley@cmha-sm.on.ca)

