

Jan 30th, 2024
Project No: 221192Wendy Kaufman, Senior Planner
Development Approvals - Planning Services
City of Greater Sudbury**RECEIVED****JAN 30 2024****PLANNING SERVICES****Re: Alternate Access and Road Maintenance Investigations**

Dear Mrs Kaufman,

In response to concerns raised by roads staff about the length of the cul-de-sac, City staff requested that the applicant conduct an analysis of resulting roadway widths during watermain, sanitary sewer or storm sewer maintenance or repair. In addition, staff requested that the applicant provide a review of possible road connections from the existing road allowance on Corsi Hill to Nickel Street, Copper Street and Gino Street.

The following summarizes findings of RV Anderson's attached Alternate Access and Road Maintenance Analysis.

Maintenance Sections

- During watermain maintenance or repair a 9.17-metre travel roadway width would remain with an open cut excavation. Sufficient for two lanes of traffic.
- During sanitary sewer maintenance or repair a 4.19-metre travel roadway width would remain with an open cut excavation. Sufficient for one lane of traffic.
- During storm sewer maintenance or repair a 4.52-metre travel roadway width would remain with an open cut excavation. Sufficient for one lane of traffic.

Proposed Connection to Copper Street (2023)

- A Copper Street connection would not be feasible to make a road connection using the City's current geometric design standards (10% maximum road grade)

Proposed Connection to Gino Street (2023)

- A Gino Street connection would not be feasible to make a road connection using the City's current geometric design standards (10% maximum road grade)
- To achieve a Gino Street connection with a 10.7% road grade the improvements necessary would conflict with existing residences fronting along the Gino Street fork as shown in detail *Proposed ROW - Gino Street Rock Section Station 0+320*

Proposed Connection to Nickel Street (2023)

- A Nickel Street connection would not be feasible to make a road connection using the City's current geometric design standards (10% maximum road grade)

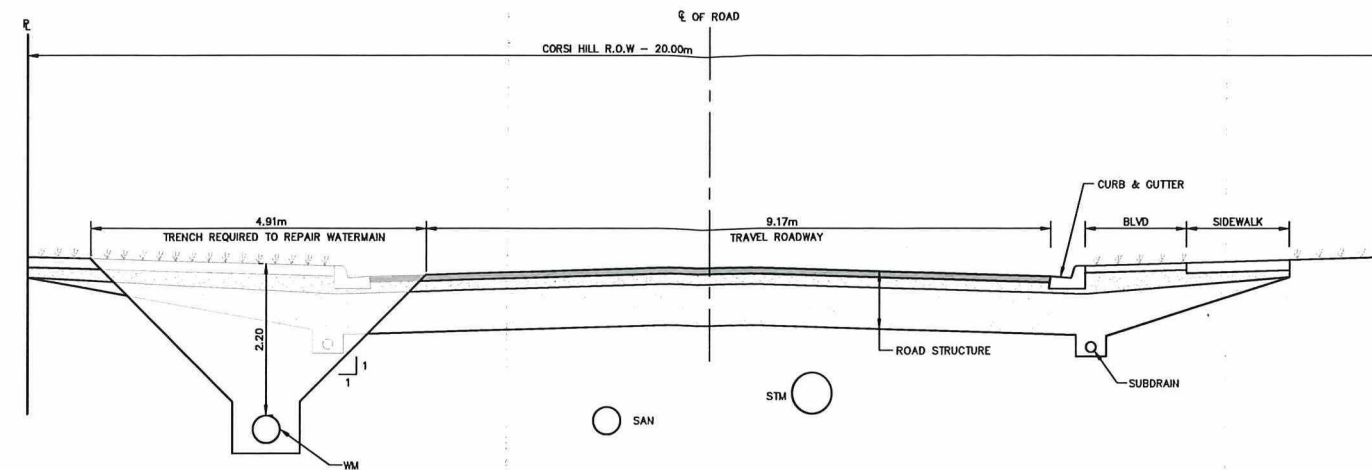
Sudbury Office1942 Regent St., Unit L, Sudbury, ON. P3E 5V5
T: 705.522.9303 | TF: 800.797.2997 | F: 705.671.9477tulloch.ca
sudbury@tulloch.ca

Respectfully submitted,

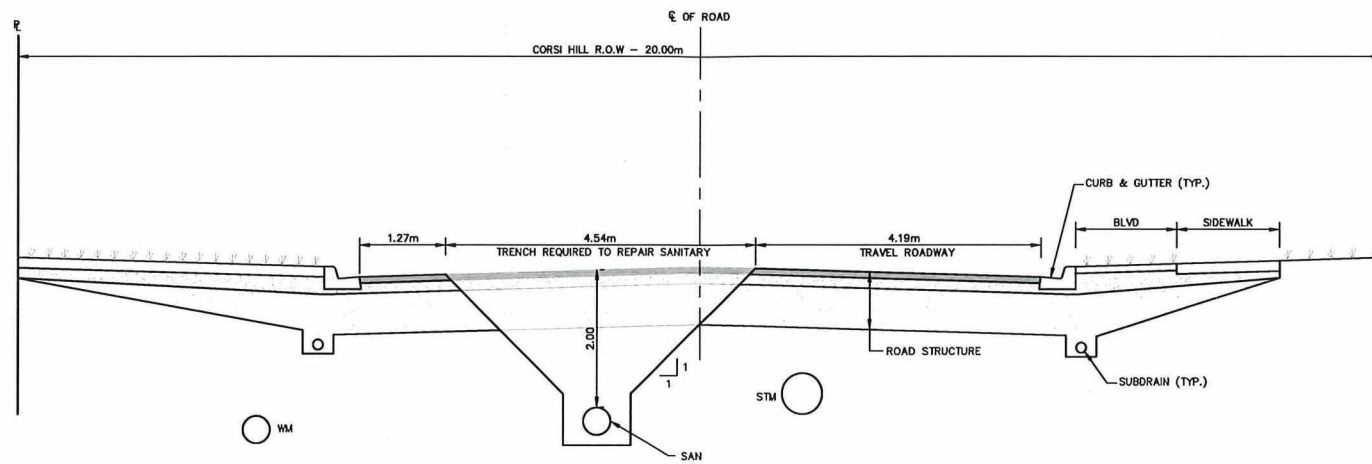
A handwritten signature in black ink, appearing to be 'Vanessa Smith'.

Vanessa Smith, M.Pl, RPP
Land Use Planner | Project Manager

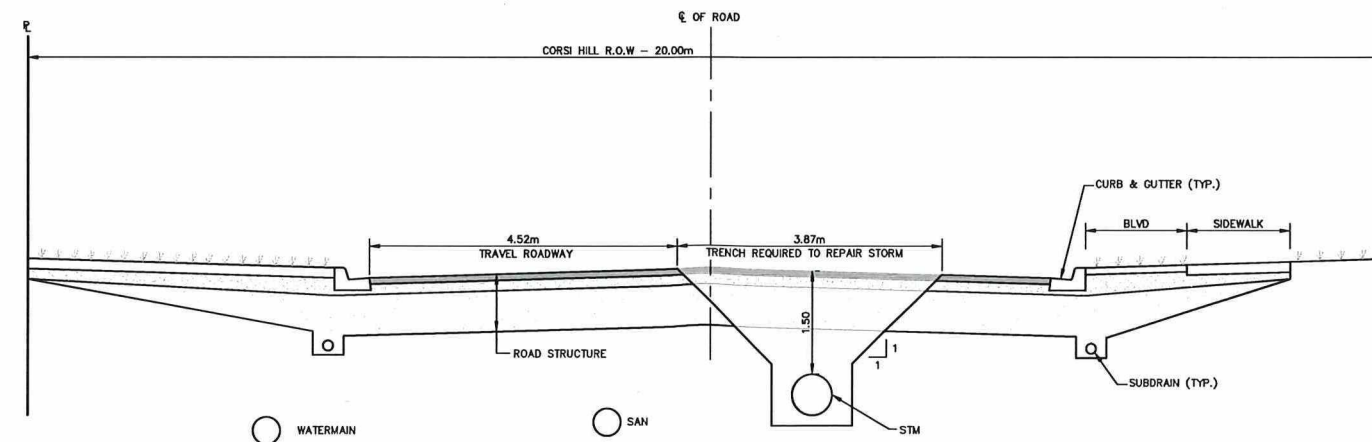
RECEIVED
JAN 30 2024
PLANNING SERVICES




WATERMAIN REPAIR TRENCH
N.T.S.



SAN SEWER REPAIR TRENCH
N.T.S.



STM SEWER REPAIR TRENCH
N.T.S.

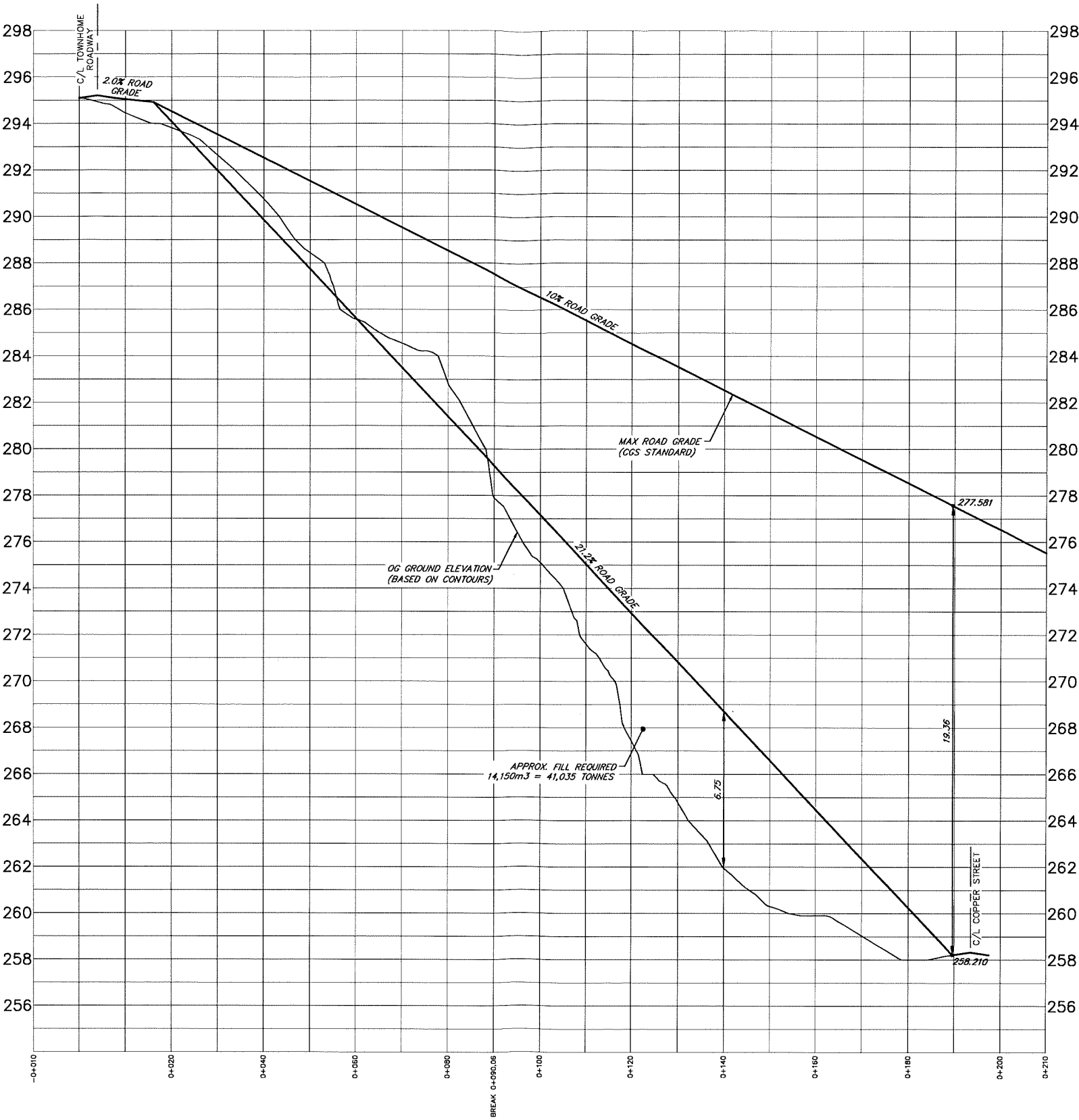
R E V I S I O N S			C A U T I O N			DATE: 2022-07-21		J. CORSI DEVELOPMENT INC.	 R.V. ANDERSON ASSOCIATES LIMITED Innovative solutions for complex challenges	SCALE: N.T.S.		
DATE	DETAILS	BY	- ALL UTILITIES ARE NOT NECESSARILY SHOWN ON THIS DRAWING. - WHERE UTILITIES ARE SHOWN, LOCATIONS ARE NOT GUARANTEED - LOCATION & SIZE OF ALL UTILITIES MUST BE VERIFIED IN THE FIELD.							CONTRACT NO.:	CAD/FILE NUMBER: 236800	
MAINTENANCE SECTIONS GENERAL LAYOUT CORSI HILL										PAGE NO.:	1	

RECEIVED

JAN 30 2024

PLANNING SERVICES

2023 - PROPOSED CONNECTION TO COPPER STREET

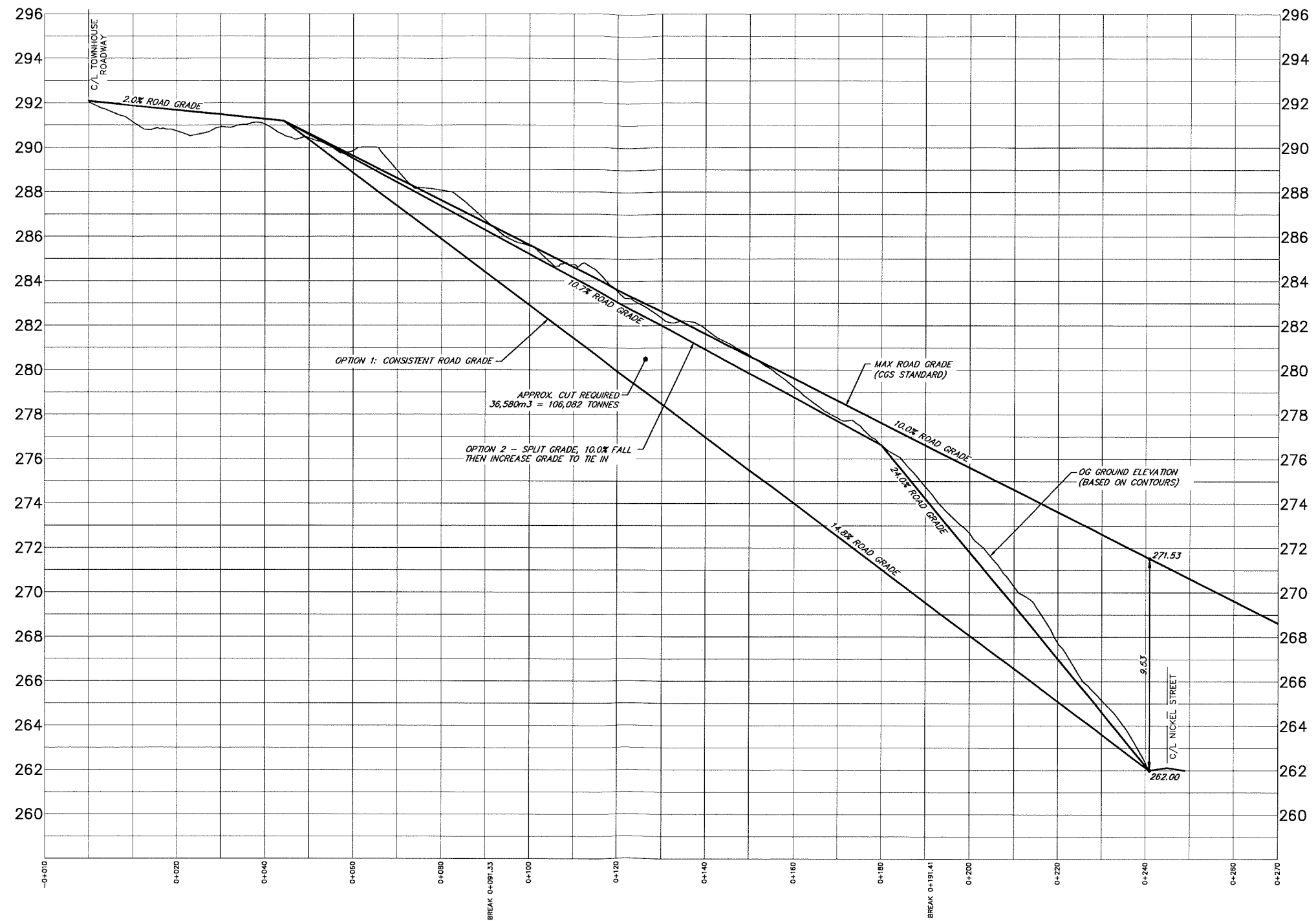


RECEIVED

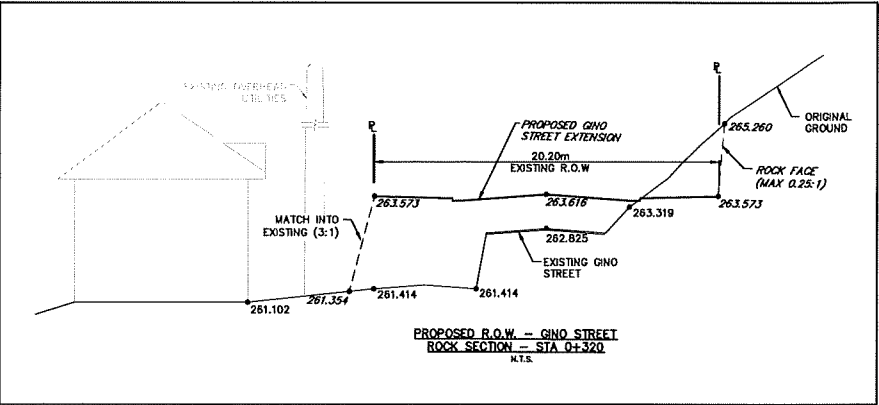
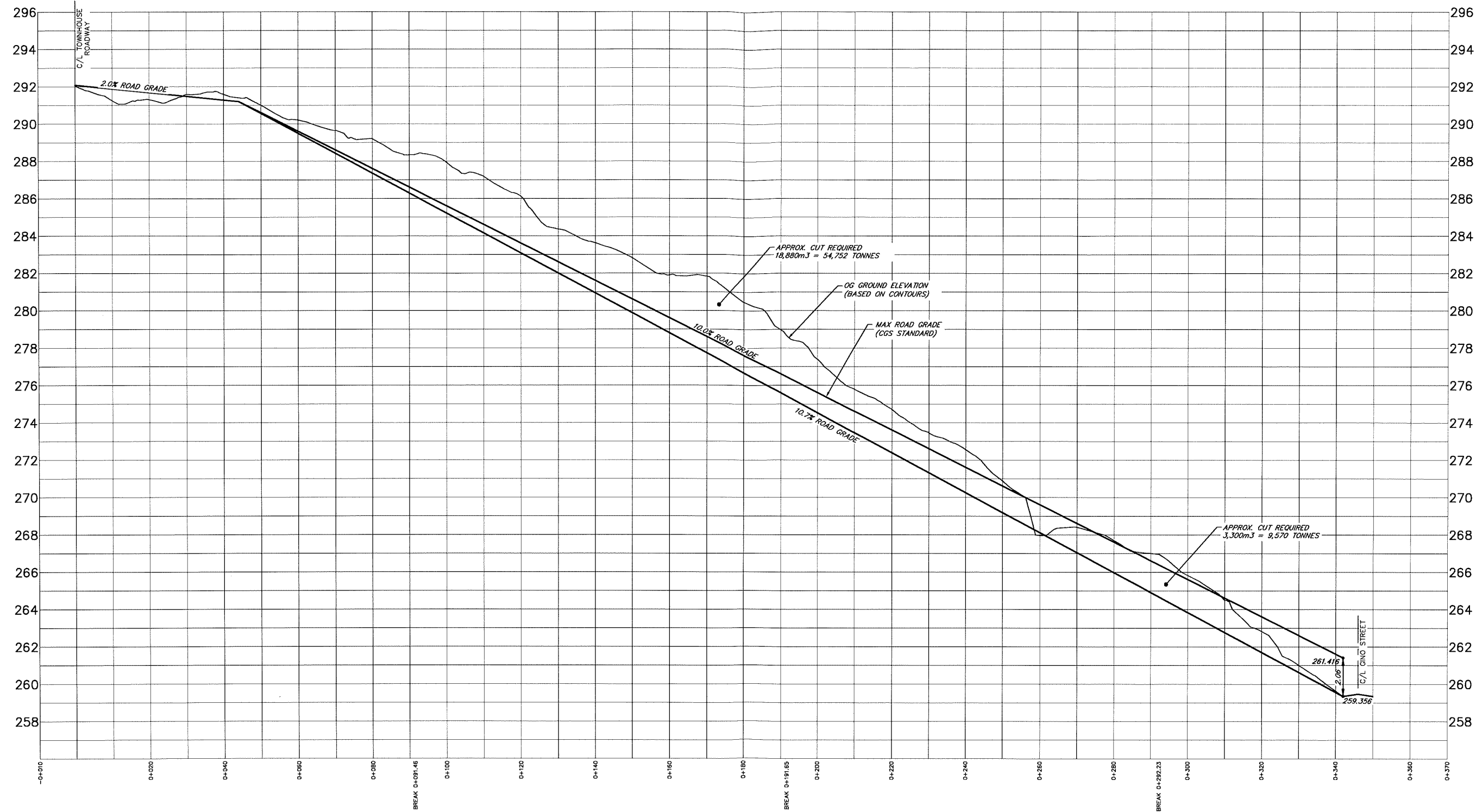
JAN 30 2024

PLANNING SERVICES

2023 – PROPOSED CONNECTION TO NICKEL STREET



2023 – PROPOSED CONNECTION TO GINO STREET



RECEIVED

JAN 30 2024

PLANNING SERVICES